



Travel Information for April 2009 R8 Committee in Venice, Italy

This 1500 year old city, once called *La Serenissima Repubblica*, is well-known for its buildings, its art, its situation as many islands separated by ‘canals’ and a lagoon at the coast of the Adriatic sea, and of course for its famous gondolas. Riding in a gondola is so expensive that it can hardly be recommended as a mode of travel.



The old buildings of Venice are supported on wooden piles which have become very hard as a result of immersion underwater, where they were prevented from rotting by a lack of oxygen, and gradually became mineralised. The wood was taken from the forests of what is now Slovenia and Croatia. However, the future of Venice is seriously threatened by rising sea levels, sinking land, pollution, waves from shipping, and the effects of dredging deep water channels. Various ‘solutions’ have been proposed, all controversial in various ways. Venice receives about 20 million visitors each year, which may be contrasted with the permanent residents of the city itself, now numbering about 62,000. There is no simple street numbering system, and the city is divided into locations called *Sestiere*. There are few long straight roads, and because of the narrow streets and canals it is not difficult to become lost when walking in Venice. Taking a car into the city is unwise. 25th April is the Feast Day of St. Mark (*Festa di San Marco*), who is the patron saint of Venice.

Eating out: Restaurants, cafes, etc, in Venice are not only expensive, there is usually a substantial additional charge for sitting rather than standing while eating – and even a charge for sitting without eating. Service charges are normally included in the prices, so that additional tips may be lower (compared to USA). Venice is reputed to be the most expensive city in Italy, and paying a high price must be expected for food, drink, accommodation and transportation.

Venezia, Venice, Venedig, Velence, Venesia, Venexia, Venecia, Veneza, Venetië, madīnat al-bunduqiyya, Венеция, Βενετία, 威尼斯, ベニス

The only access to Venice other than by boat is via rail or road across the *Ponte della Libertá* (Liberty Bridge).

The *Marco Polo International Airport* (Code VCE), to which many airlines fly, is on the coast 6km to the north of the city centre.

A few airlines, including Ryanair, may pretend that they fly to Venice, but actually fly to *Treviso* Canova airport (code TSF), 30 km away. See last page for travel information from Treviso Airport

It is also possible to fly to Trieste, from where a train to Venice runs frequently.

The R8 Committee Meeting is at Hotel Russott (part of Ramada group), on the mainland not far from the airport, at: Via Orlanda, 4, I-30173 Venezia, San Giuliano. Tel. +39 0415310500

Fax +39 0415312278 e-mail: <info@russotthotels.com> www.russotthotels.com

The IEEE rate for a single/double room at the Hotel Russott is 129/169 € which includes VAT and breakfast. A free shuttle to the City is offered by the Hotel, but is likely to have to be reserved well in advance, so that the frequent #5 bus (see below) or #19 bus may be a more practical option, at least if the weather is not wet.

When returning from the city by bus, board at “lane A1” in the bus station at *Piazzale Roma*, and consider alighting at the stop in *Parco San Giuliano*, since the walking route may be more comfortable than from the stop on *Via Orlanda*.

In order to reach the Hotel from the Airport, do NOT travel to the city of Venice itself. Either take a taxi or use the public transport bus #5 which goes near to the Hotel, and for most of the day has a frequency of about two per hour.

Do NOT take the blue airport ATVO ‘Fly bus’, because this goes directly to the City (to *Piazzale Roma*, next to the *Santa Lucia* train station) and will **not** stop near to the Hotel.

The bus #5 belongs to ACTV, which operates local bus and water transport for Venice. The #5 also goes to *Piazzale Roma* but will stop at San Giuliano, near to the Hotel Russott (a ride of ~7 km).

After the second traffic light from the airport departure, ring the bell, and in about 100m you will be at the correct stop to alight, at the Capitol Palace Hotel (Via Orlanda 1, Venice, I-30173). Hotel Russott is on the opposite side of the road to the bus stop: To avoid traffic, you have to cross an iron pedestrian bridge (stairs up and down), turn right (to face the oncoming traffic) and walk ~150m along the roadside to reach Hotel Russott. There is no sidewalk, so with heavy luggage this might not be comfortable.

If you find yourself travelling in the bus across the *Ponte della Libertá*, you have missed your stop, gone too far and need to go back.

The single fare from the Airport is 1.10 €. Tickets may be purchased at the public-transportation booth in the arrivals terminal and then must be validated in a (normally yellow coloured) machine at the bus-stop before entering the bus by the front door. The #5 bus has limited storage space for large luggage, and should not be used if you are unable to carry your own luggage. You might have to buy an additional ticket for your luggage.

A 1.10 € ticket is good for travel for 75 minutes from validation-time on land services, changes of bus being allowed, provided that the general direction is maintained (e.g. return on the same ticket is not permitted). Various discount tickets and travel cards are available for those planning to make many journeys. For example, a 12 hour ticket is 14€ and a 24 hour ticket is 16€. (each valid for land + water travel).

A pre-purchased single land + water ticket costs 1.70€ and can be used to travel for 90 minutes from validation, with similar rules (e.g. return direction not allowed). Generally, tickets cannot be purchased on the land-buses, so must be obtained and validated in advance. A water-only ticket costs 6.50€ for 60 minutes validity.

The main water-buses are known as *Vaporetti*. *Traghetti* are used for short canal crossings where there is no bridge nearby.

There is direct water-transport between city and airport, but this is not useful for access to the Hotel Russott.

Useless information: ACTV owns 600 land-buses & 120 waterborne vessels, carrying annually ~180M passengers by 0.5M "movement hours", with land-bus services travelling over 30M km. The company has ~3,000 employees.

Rail travel to Venice:

Long-distance trains into Venice cross the *Ponte della Libertá* and arrive directly at the main station of *Santa Lucia*, which faces the *Canal Grande*. This is close to the *Piazzale Roma* but separated from it by the canal.

There is a rail station on the mainland called *Venice Mestre*, which might be preferable if you plan to go from rail station to Hotel Russott. The bus #9 may be available to take you from *Venice Mestre* station to the Hotel, but it is advisable to check with the driver to ensure that the bus will actually stop near the hotel.

There is a blue “Fly bus” calling at *Venice Mestre* station and the airport which will NOT stop near the Hotel.

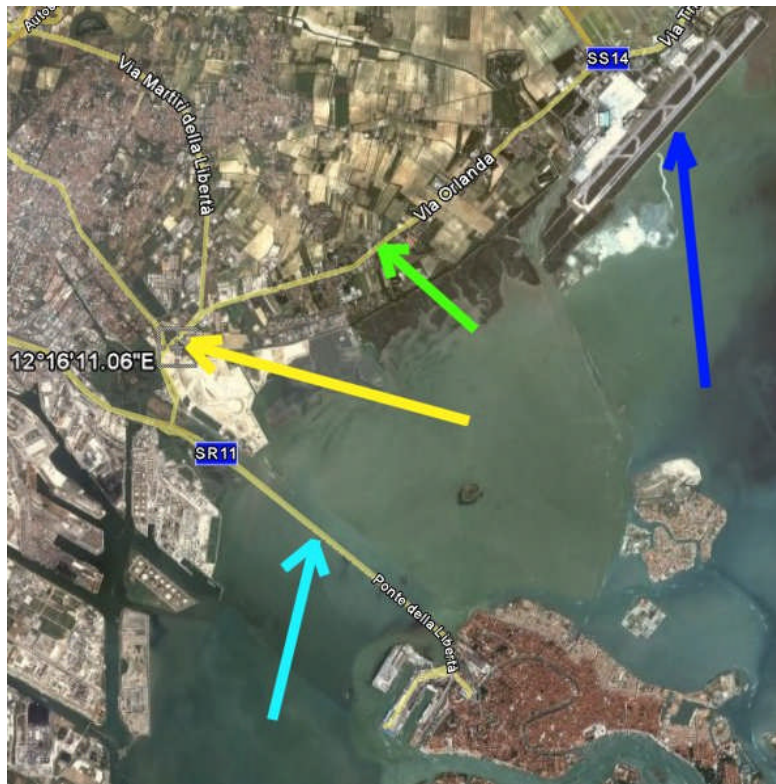
The #1 vaporetto line leaves from outside the *Santa Lucia* station and goes to *Piazza San Marco* (so it is a good choice for seeing many views of Venice). #2 vaporetto line is similar but faster. Boat-lines with a PDF map of routes can be found at:

<http://www.hellovenezia.com/jsp/en/muoversi/index.jsp>

However, beware that a single ticket (valid for 60 minutes) costs 6.50 €. The ticket must be validated in the yellow machine *before* boarding the *first* boat (otherwise risk a ~ 30€ fine).

When reading timetables, note the following terminology:

f = **feriale** - working day, **F** = **festiva** – holidays, **ff** = **tutti i giorni** - every day

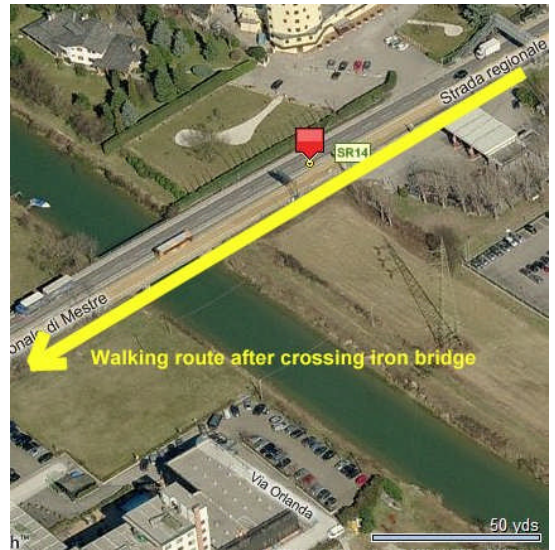


Hotel location: yellow arrow Via Orlanda: green arrow (also known as Strada Regionale di Mestre)
Airport: dark blue arrow Ponte della Libertá: cyan arrow

San Giuliano roundabout leading to Ponte della Libertá: red arrow
Via Orlanda: green arrow (on map below, also points to iron pedestrian bridge and bus stop)



Mosquitoes require fresh water to breed and most of the water around Venice is salt water, but there are reported to be many mosquitoes available, so it may be advisable to come prepared for them (e.g. with repellent or netting), although perhaps April will be too early for them to be abundant.



Route from bus stop across iron bridge, and along the road to Hotel Russott.



Travel from Treviso Airport

The easiest and cheapest way to and from Treviso Airport is to take the blue ATVO Eurobus. Ticket purchase is from the ATVO counter in the airport, and the ticket has to be validated in the machine inside the bus. Bus departures coincide with Ryanair and Transavia arrivals and departures, and the fare is 6€ one-way or 10€ return, including cost of all luggage. This is naturally far cheaper than a taxi, and, more important, is far cheaper than another service, Shuttle Direct, which should be avoided because of its high cost.

However, you need to understand that the ATVO bus goes to *Piazzale Roma*, it does NOT stop at or near the Russott Hotel, although it may drive past. You could try to make a special deal with the driver to stop just for you, but that may not be possible. If you take this bus, get off at *Mestre Rail Station* (e.g. before the bus crosses the *Ponte della Libertá* to *Piazzale Roma*). Be sure to get off at the station stop and not at the other Mestre stop (*Mestre Piazza 27 Ottobre*). From there, take the #9 bus or else a taxi to Hotel Russott as described above under **Rail Travel to Venice**.

More information about Treviso airport can be found at:

http://europeforvisitors.com/venice/articles/treviso_airport_bus_to_venice.htm

and for the ATVO buses at <http://www.atvo.it/>

Tony Davies