

Member Activities Report

Ali El-Mousa SM

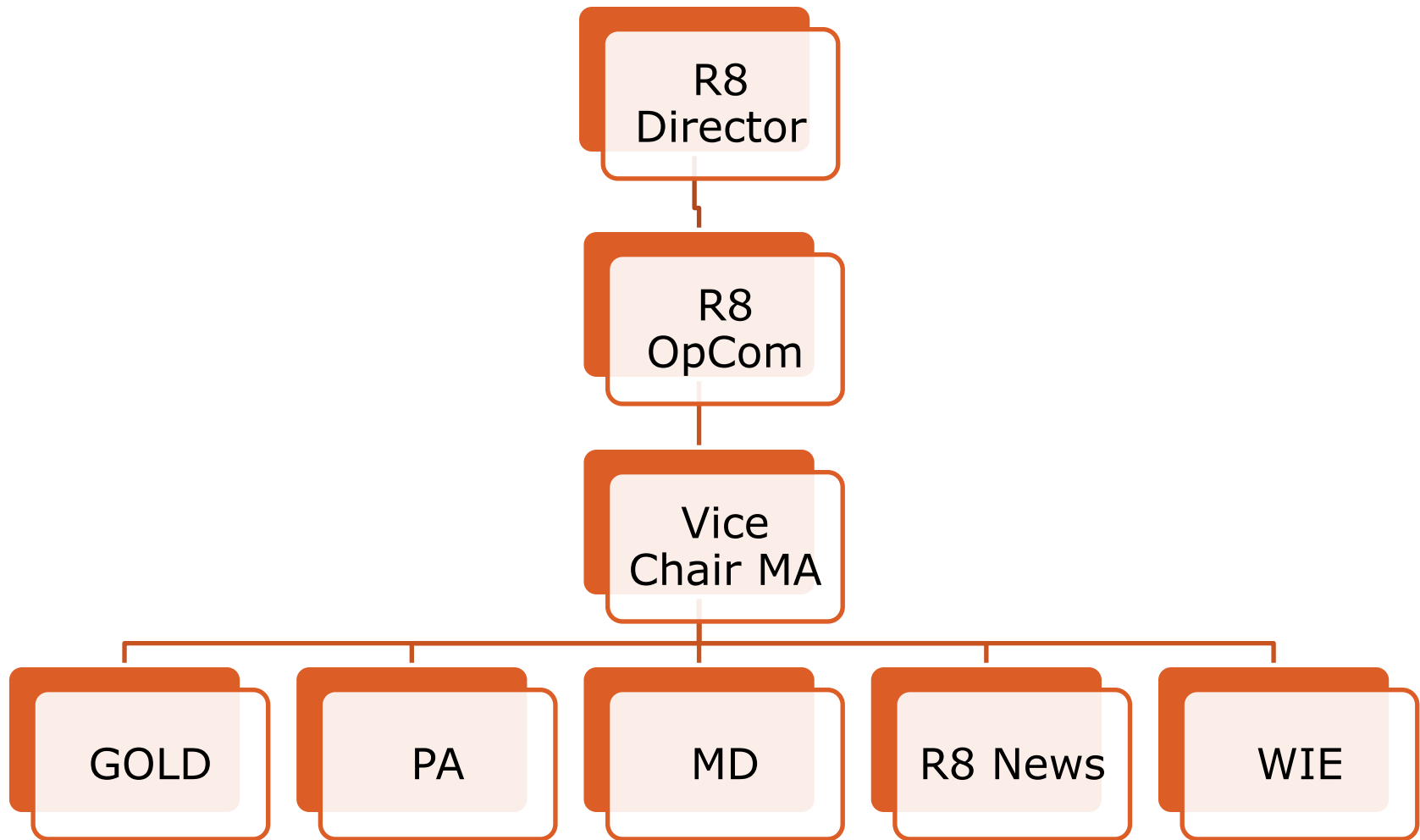
IEEE Region 8 Vice-Chair, Member Activities

Outline

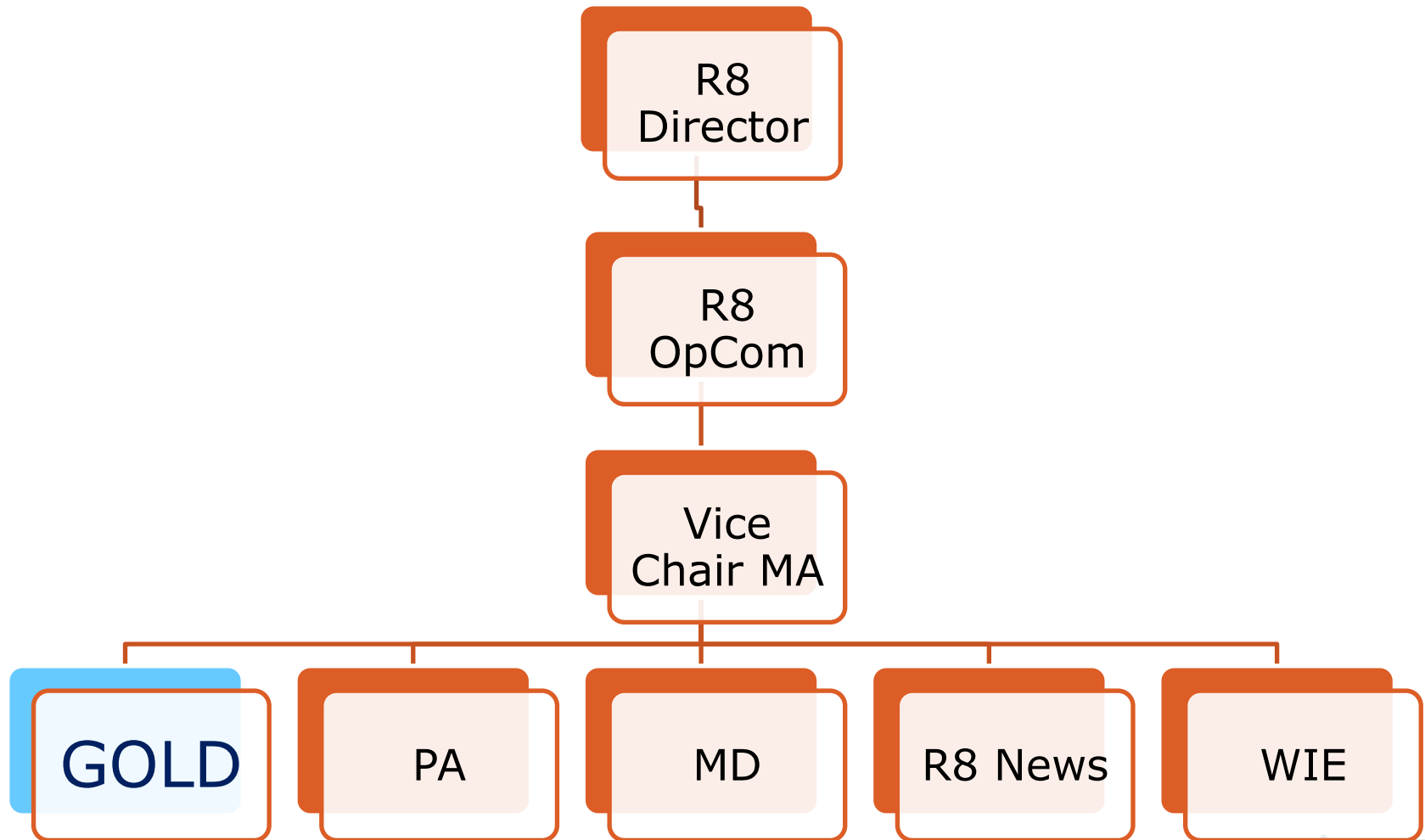
- R8 MA admin structure & role
- R8 GOLD subcommittee role
- R8 PA subcommittee role
- R8 MD subcommittee role
- R8 News Letter
- R8 WIE

More details in agenda book starting page 68

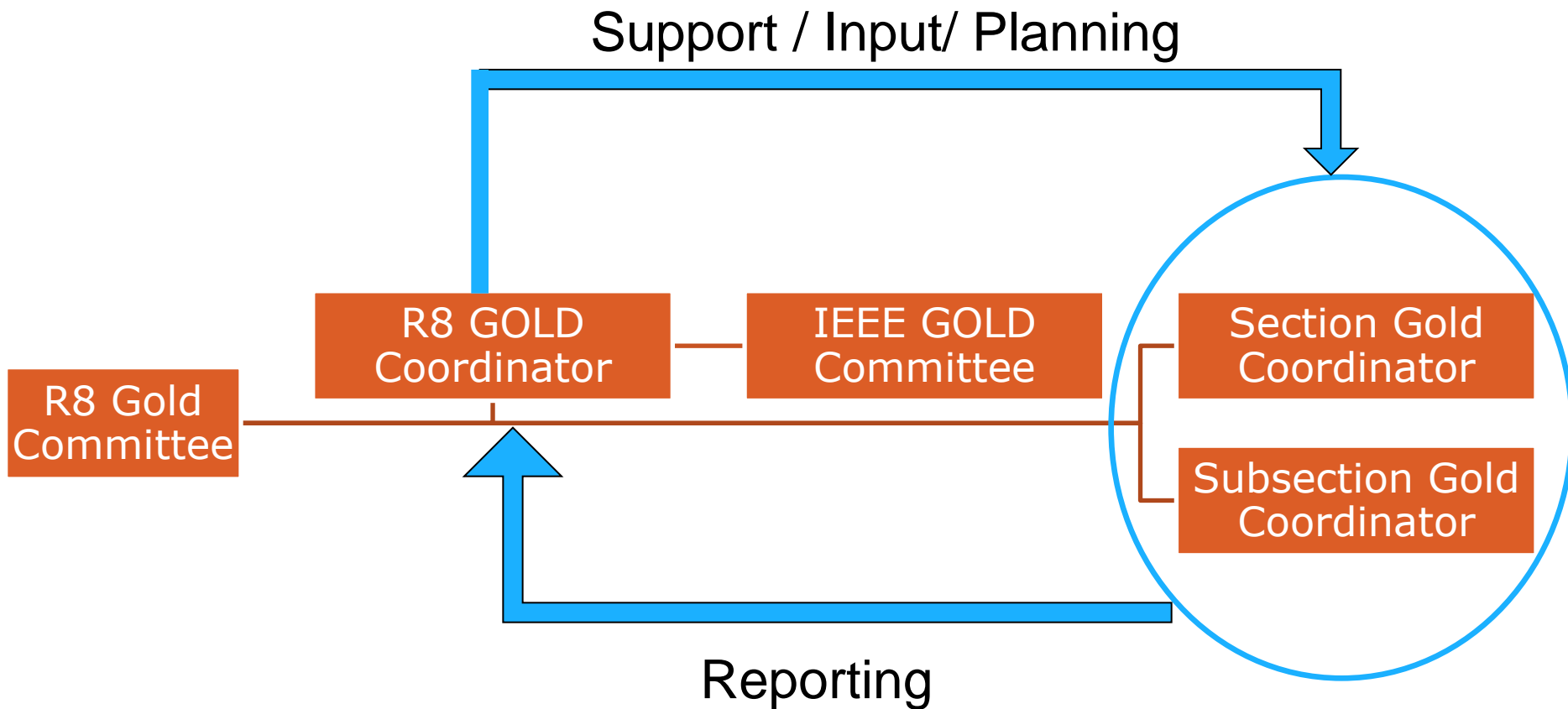
R8 MA Relationships



Graduates of the Last Decade GOLD



R8 GOLD Subcommittee Role



GOLD at Section Level



GOLD Committee



Salima Kaissi
Chair



João Figueiras
Past Chair



Nele Reynders

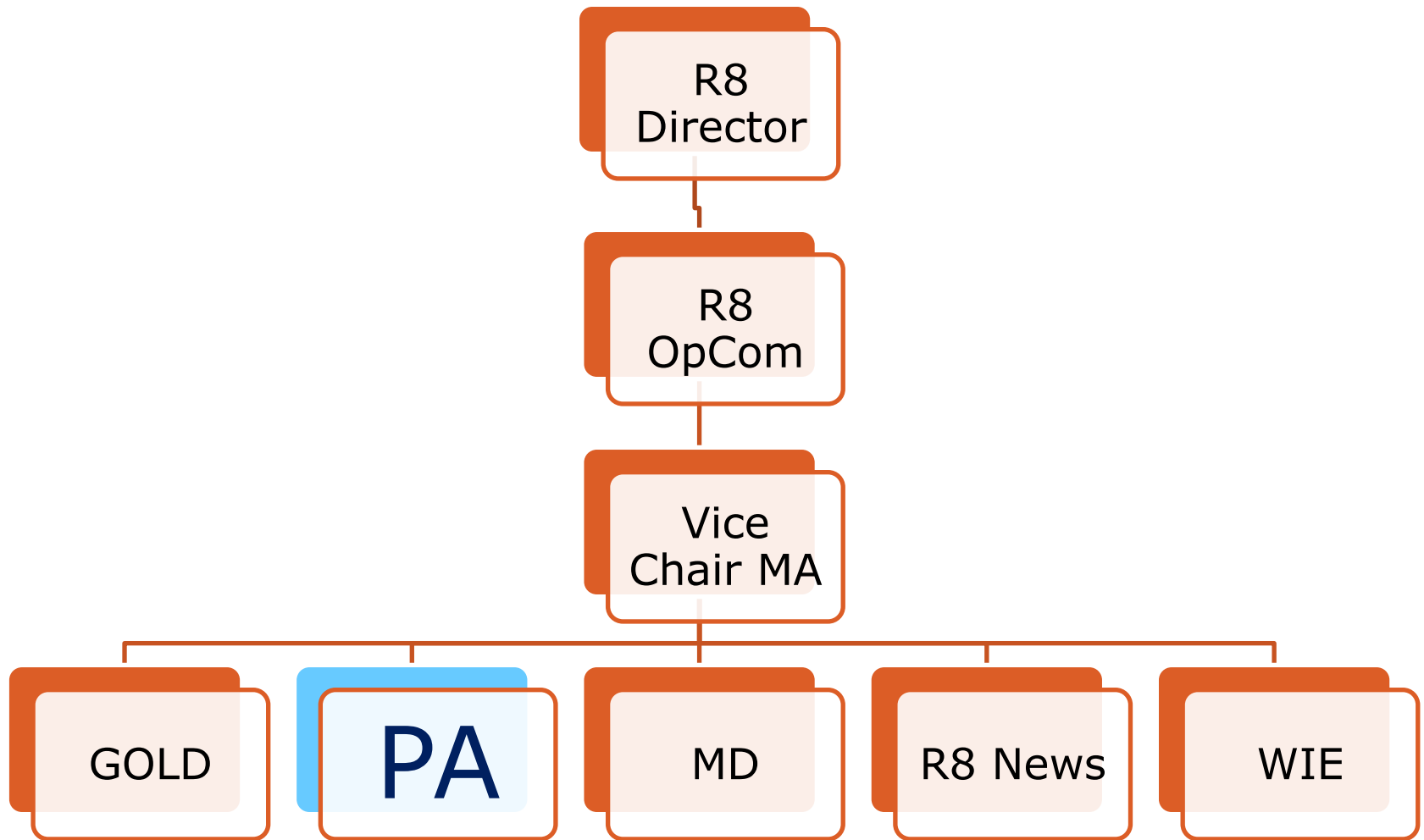


Rafa Sliz



Khaled Mokhtar

Professional Activities



Members:

- continuous education
- enhancing member's career
- interest in TA and PA topics
- networking
- access to PA products
- professional opportunities
- knowledge
- employability

Sections:

- local activities
- membership development
- addressing members
- local volunteers
- local experts
- Member satisfaction and engagement



R8 Professional Activities

Trainers / Volunteers:

- networking
- professional experiences
- IEEE as reference
- professional opportunities
- ...

IEEE / Region 8:

- continuous services
- local activities
- membership development
- networks of volunteers
- IEEE products
- ...

The 2012 PASC team



Matej Zajc (Slovenia)

Contact PASC:
r8pasc@ieee.org



Emilio Corchado
(Spain)



Urmet Janes
(Estonia)



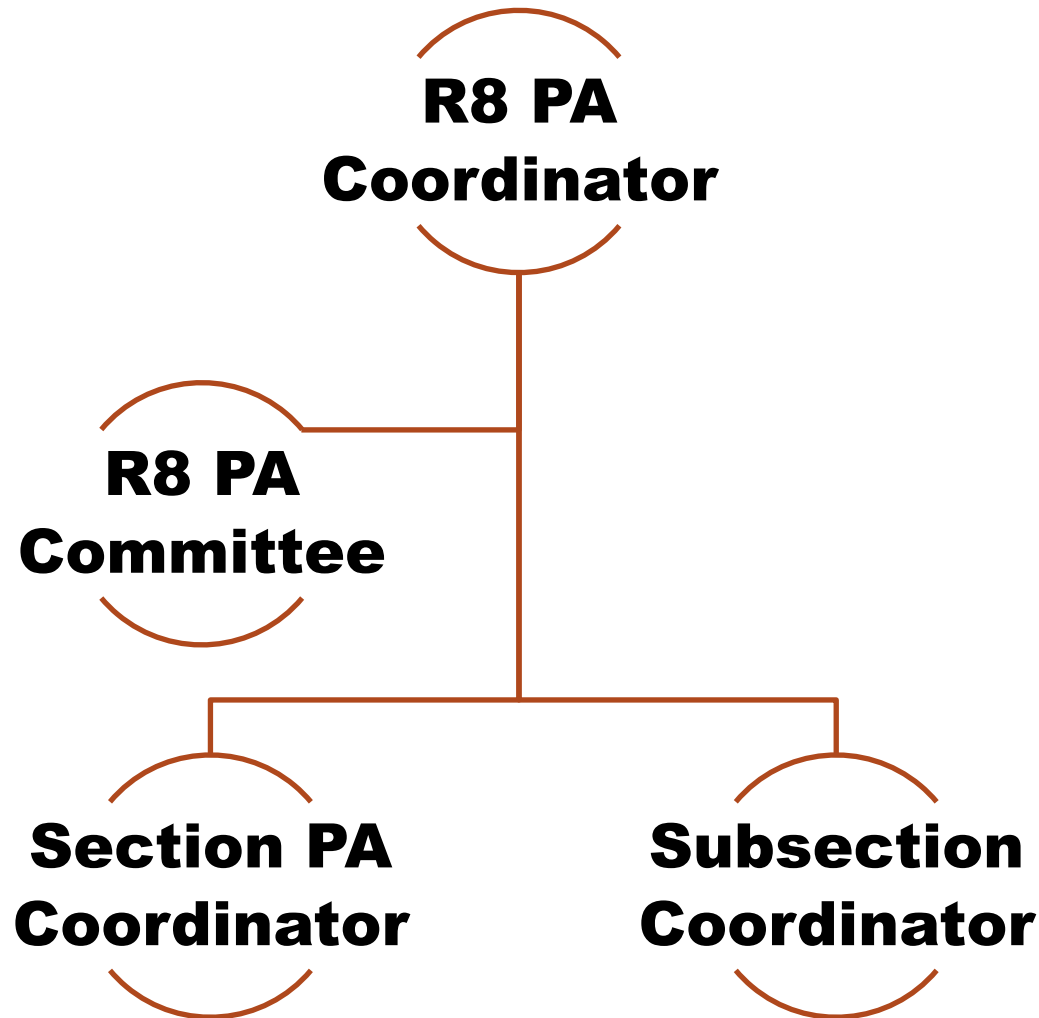
Jan Haase
(Austria)
Corrs.



Han Van Loon
(Switzerland)
Corrs.



R8 PA Subcommittee Role



PA Activities Target Audience

Students

Young
Professionals

GOLD
Members

Others

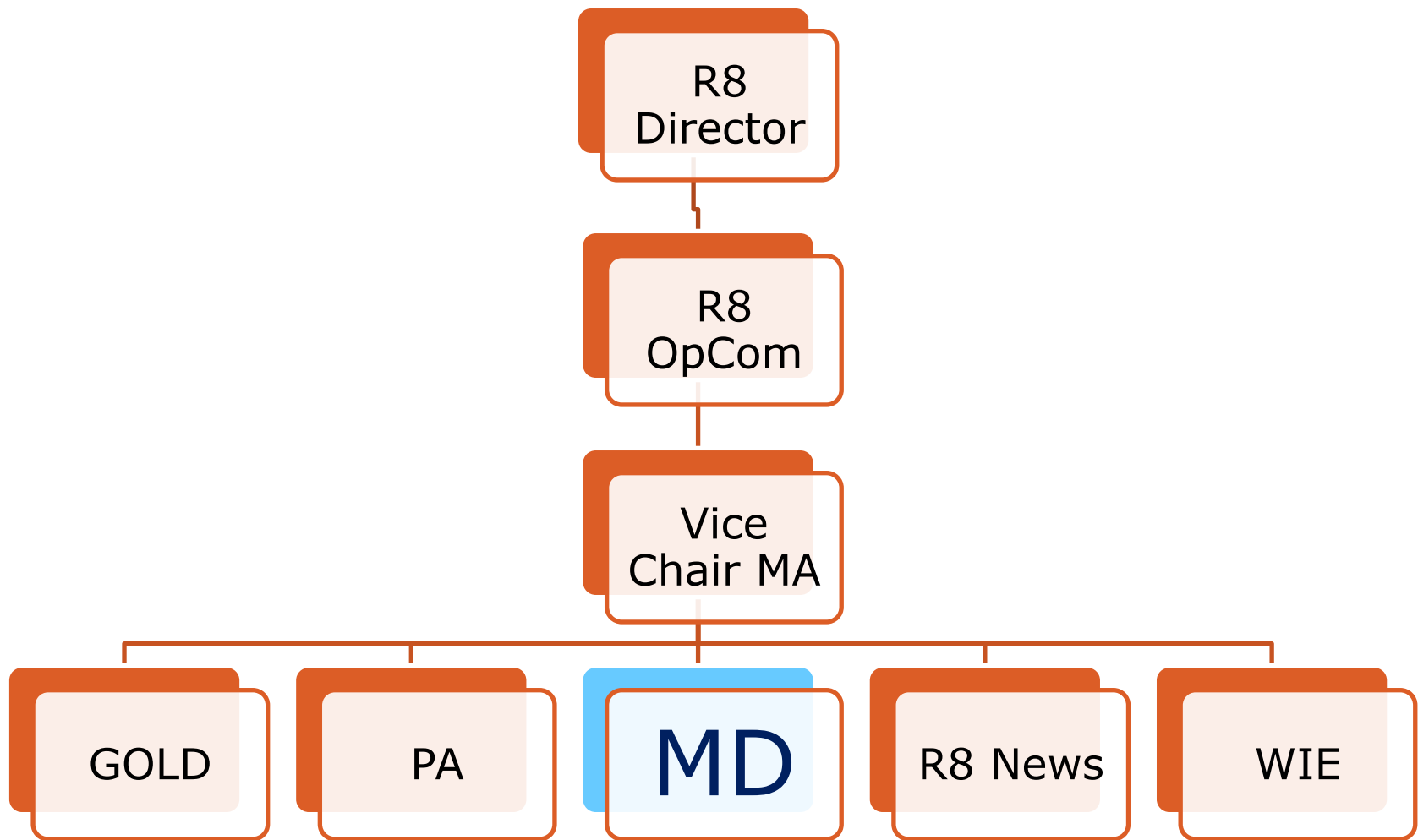
	Date / Venue	PA activity	Speaker/Trainer
IEEE Central European Student Branch Congress, Austria	15. May Linz, Austria	Presentation	Joseph Wenniger
Professional Activities event, Morocco	10.-13. May Fez, Morocco	Workshops	Kurt Richter
Professional Activities event, WIE Kuwait	28. May Kuwait City, Kuwait	Workshops	Han van Loon
Sections Congress 2011	19.-22. August San Francisco, USA	Presentation	Matej Zajc
IEEE UKRI SBC 2011, SB UKRI	2.-4. September London, UK	Workshop	Hazel Sales
Professional Activities event , Spain	20.-21. October Salamanca, Spain	Workshops	Han van Loon Jose Ignacio De Santiago Cid
Professional Activities Summit, Jordan	November 12.-13. Amman, Jordan	Parallel Workshops	Margaretha Eriksson Kurt Richter Hafidh AlSamarrai
ICAST 2011, Nigeria	November 26, Abudja, Nigeria	Conference	Ezendu Ariwa, Godfrey Onyiagha, Joshua Adewoye Lawrence Agboola, Sylvester Chiemeka, Kolawole Oluwatosin

Sections Support

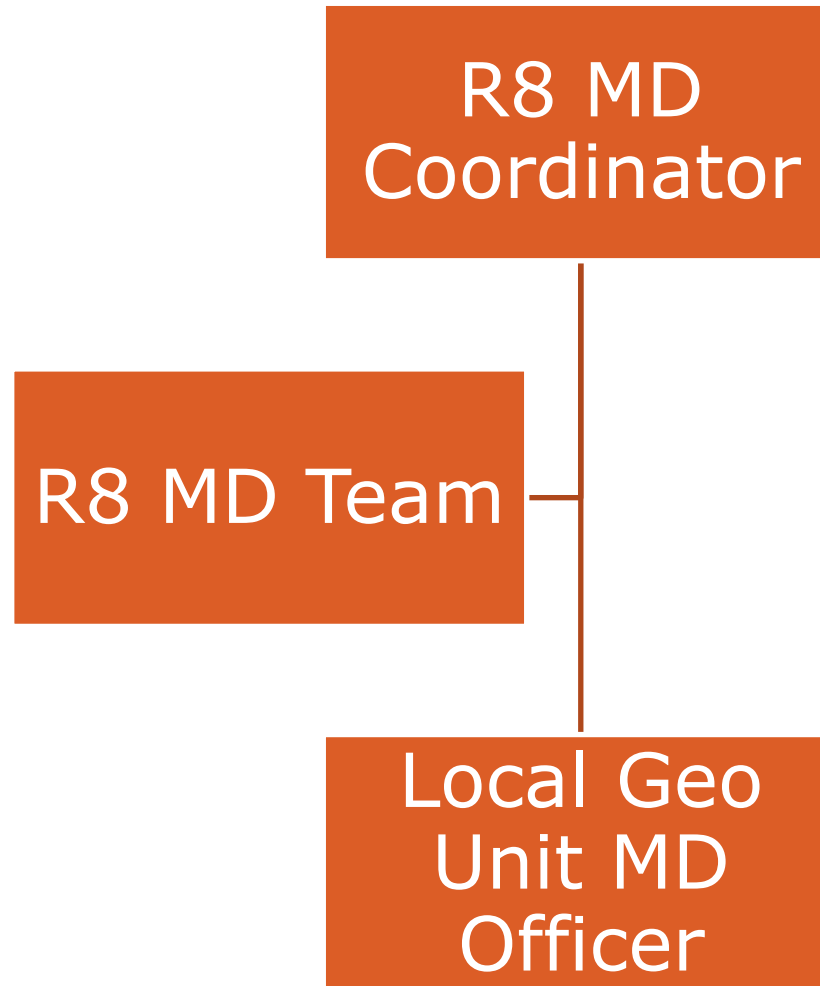
1. Appointing a Professional Activity volunteer in case not yet present.
2. Reporting on Professional Activities in your Section.
3. Contacting R8 PASC for organizing events in your Section.
4. Propose volunteer presenters with Section's references.

r8pasc@ieee.org

R8 Membership Development



R8 MD Structure



MD Subcommittee



Mourad Loulou
Tunisia



Dirk Van Hertem
Sweden

Adam K. Jastrzebski
UKRI
Corresp.

Antonio Luque
Spain
Corresp.



Aleksandar Szabo
Croatia

Tasks of the R8MD team

Interaction with section MD officers

Spread information

Train MD officers in the use of MD tools

Follow-up on membership statistics

Recruitment and retention

==> Retention is a problem this year

E-membership

Member grade elevation

Q: who in your committee/chapter/section is not yet a senior member yet is entitled to?

How to reach members in large sections?

Region 8 Membership

- At the end of Feb 2012: 56533 members
- Overall membership is rising (barely)
- Graduate student membership growth is much lower than expected while student membership growth is higher
- Recruitment is good, retention is dropping (shorter average membership)
- About 25 % of new senior members are from R8

Regional Snapshot	Total this Month	'12 vs. '11		% Change	Aug 2012 400,000 Member Goal – R8		2012 New Members (FEB)
Total Membership	56,533	▲	305	0.5%	78.2%	Total	8564
• Higher-Grade	40,434	▲	5	0.0%	73.6%	Higher-Grade	2156
• Students	16,099	▲	300	0.0%	92.6%	Student	6408
IEEE Worldwide - Total	313,769	▼	(2,115)	-0.67%	400,000		45,329

2012 Retention Dashboard / Benchmark	Cumulative – Through This Month			
	Professionals	Graduate Students	Undergraduate Students	Total
Region – Total Members	71.6%	66.4%	33.1%	66.5%
Region – 1 st -Year Members	33.4%	51.8%	24.4%	34.8%
IEEE – Total Members	75.9%	59.4%	24.9%	67.6%
IEEE – 1 st Year Members	33.0%	41.1%	19.5%	28.2%

e-Membership in Region 8

- [Http://www.ieee.org/emember](http://www.ieee.org/emember)
- E-Membership is a new electronic membership to individuals in developing nations.
- E-Membership is a paperless membership option with reduced annual base dues.
- In Region 8 the e-Membership dues are US\$ 63, compared to the traditional membership base dues of US\$ 149.
- E-membership had a slow start, but is now doing reasonably ok
- E-membership can be a major driver for membership recruitment in your section!
- This requires an outreach to the non-member

MD work and the local MD officer

- The local MD officer has an important task within the section
- Many tools are available to help the MD officer
 - SAMIEEE, Vtools
 - Monthly MD reports and R8 MD reports
 - Monthly Webcasts
 - Regular inquiries to MD officers
- “The R8 MD committee does not feel a lot of commitment”
 - Virtually no responses
 - Very low presence at MD webcasts
- We would like to ask section chairs to follow-up and to acknowledge the importance of membership development
- Membership development requires quite a lot of work.

Life Members

Region 8 Committee Meeting in Berlin
Spring 2012



Aleksandar Szabo
IEEE R8 Life Members Coordinator
a.szabo@ieee.org

Life Members

- **IEEE "Life"** status is an automatic process based on an individual's membership record. To qualify for **Life member** status, a member must be at least **65 years of age** and have been a member of IEEE or one of its predecessor societies for such a period that the **sum of his/her age and his/her years of membership equals or exceeds 100 years.**
- **Benefits of Life membership:** Dues and regional assessments are waived. For qualifying Life Members, society fees are waived as well. Individuals may receive reduced member rates at IEEE sponsored conferences. Life Members continue to receive the same benefits that are available to other IEEE members.
- An **IEEE Life Members Affinity Group** is a local Unit of an IEEE Organizational Unit, constituted by IEEE members who have obtained Life Member status and established by petition, and concerned to represent and fulfill the needs of the local IEEE Life Members.

Life Member Affinity Groups in R8

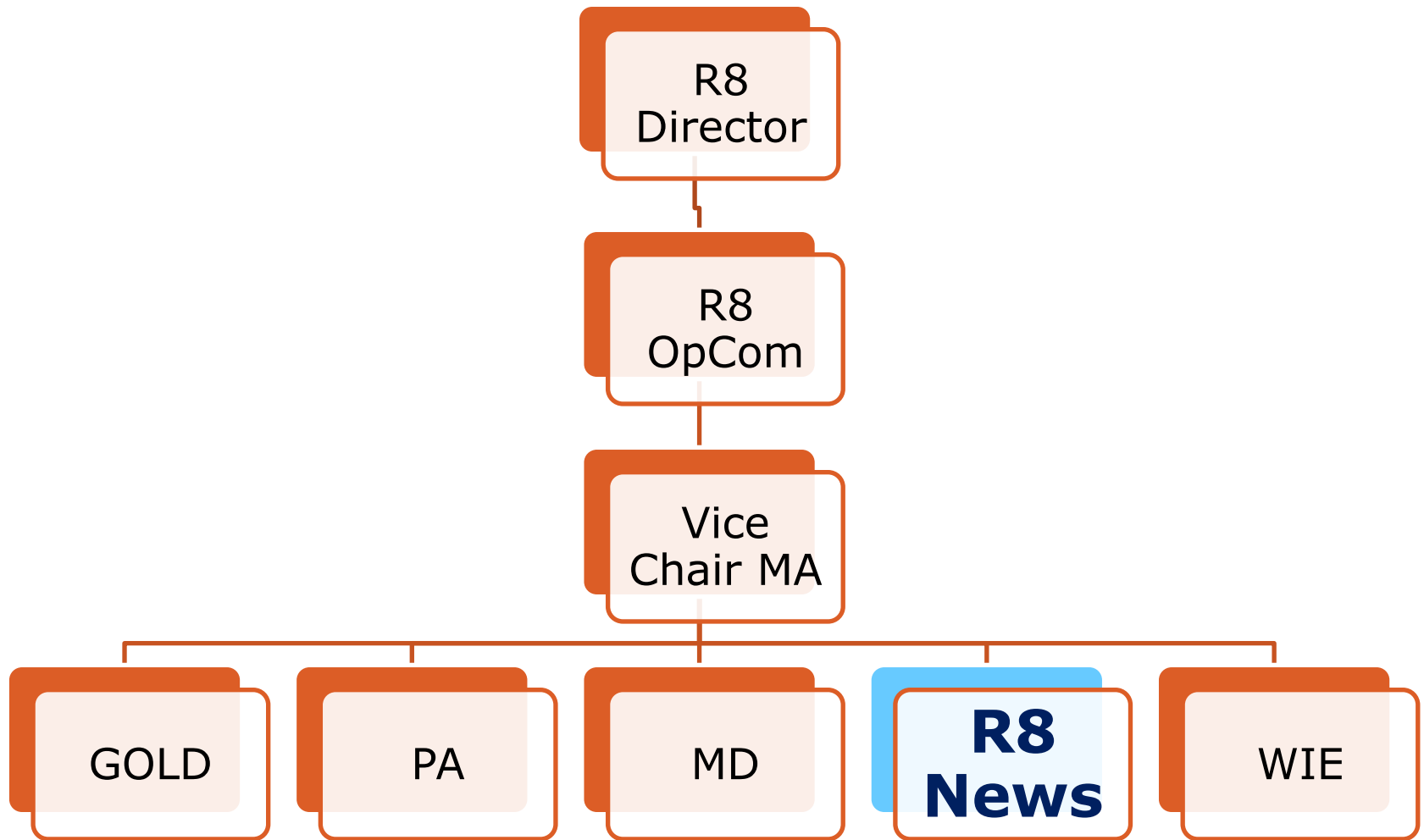
- In R8 we have LM Groups in 10 Sections: **Croatia, France, Greece***, **Hungary***, **Israel**, **Italy**, **Slovenia***, **Spain**, **Switzerland** and **UK&RI** Section. Three of them are **formed in 2011 ***.
- Congratulations to the 2011 Outstanding LM Affinity Groups: **Israel and UK&RI**.
- In many other Sections in our Region we have enough Life Members **to form new LM Groups**:

Section	LMs	Section	LMs	Section	LMs
Austria	16	Finland	23	Romania	5
Benelux	98	Germany	148	S Africa	7
Denmark	32	Norway	35	Sweden	80
Egypt	29	Poland	16	Turkey	11

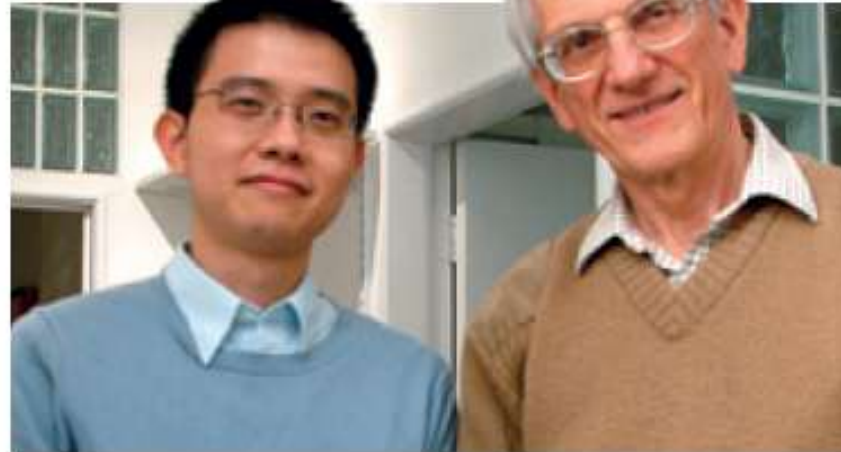
The Role of Life Member Groups

- Why establish an LM Group? More Life Members will remain involved if there is an LM Group in the Section.
- What LM Groups can do? Life Member Groups can cooperate with Chapters, GOLD AG and Student Branches in common projects. Life Members can help in Section Operation and especially in Membership Recruitment and Retention.
- Life Members often know much about history and can help a lot in LM Group and Section history activities.
- Active LM Groups will receive 200 US\$ (holding at least 2 meetings during the previous calendar year). LM Groups are authorized by the IEEE Life Members Committee an additional annual budget up to 1,000 US\$.
- For any questions concerning LM group formation contact me by e-mail a.szabo@ieee.org

R8 News



editorial



Your editors: Zhijia Huang and Roland Saam

<http://www.ewh.ieee.org/reg/8/news/>

Deadline for **Next issue** is **April 1st 2012**

Extended **specifically** for R8 Berlin meeting attendees to **April 6th** provided they submit an intention email to the editors by **April 1st**.

R8 News: It's all about communication

Delivered four issues/ year accompanying the Spectrum magazine with the message: IEEE is active & benefits you

Colorful, modern, lively, informative items - easy to read

Valuable: represents a permanent record of R8 achievements



IEEE region8news
Vol 14 No 4 December 2011
www.ieee.org/r8 Published quarterly and distributed to more than 70,000 IEEE members across Region 8

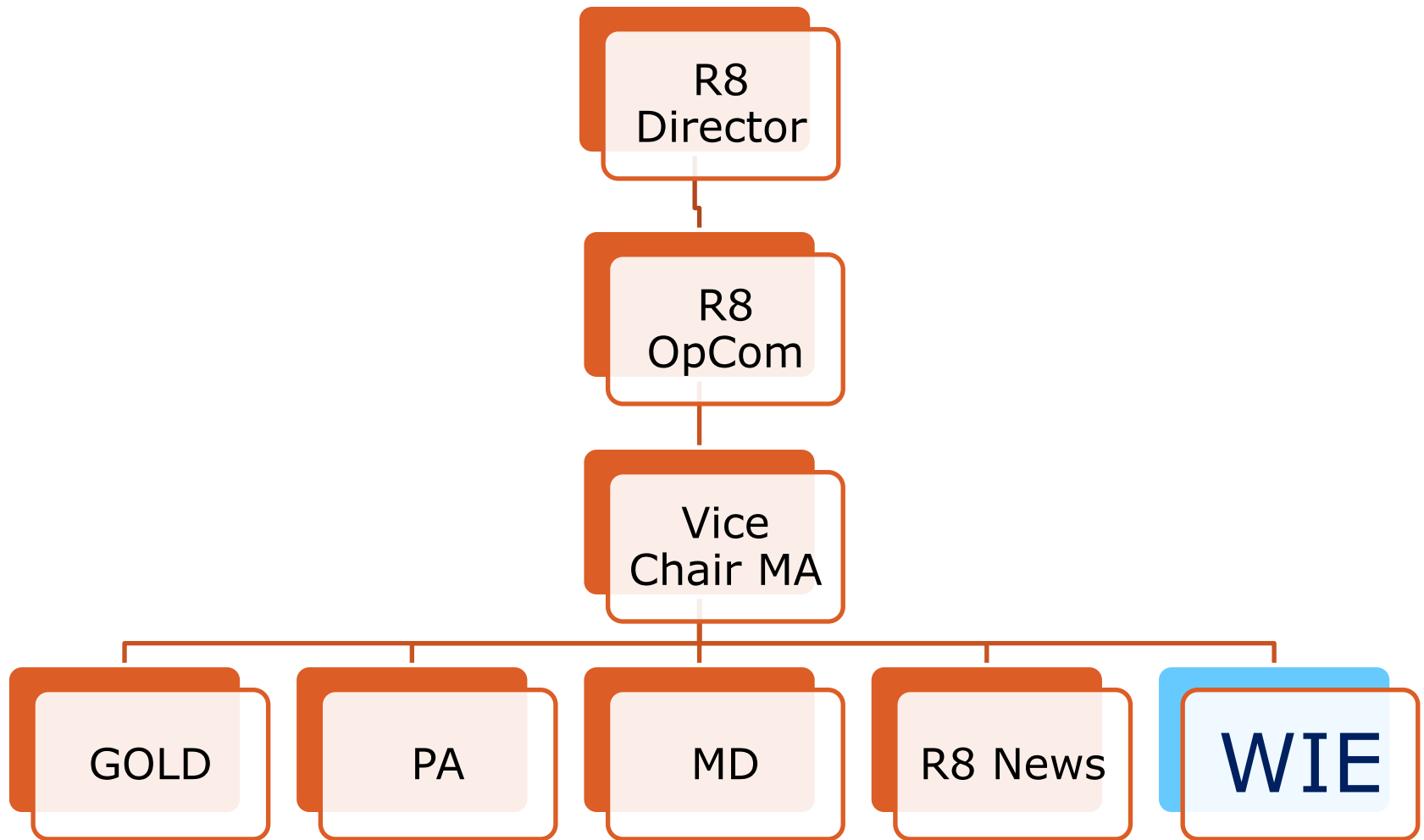
Biggest and best AFRICON hears 251 papers in its technical program
THE 19th IEEE Region 8 conference, AFRICON 2011, 'Sustainable Energy & Communications Development for Africa', took place on 13-15 September in Ukingstong, Zambia. It was the biggest and best AFRICON ever, attracting more than 500 delegates.

IEEE members from 92 countries converge at Sections Congress
IEEE Sections Congress 2011 (SC2011) was held on 19-22 August in San Francisco, California, USA.

Region 8 Committee meeting at Congress 2011
THE 97th Region 8 Committee meeting was held on 18-19 August in conjunction with SC2011 in San Francisco.

Table of Contents:
Region news 1-3
IEEE contacts 4
Section and Chapter news 5-7
M&E and Gold News 8
Student news 9-12

R8 Women in Engineering





Ferdinanda Ponci
ponci@ieee.org

IEEE R8 WIE Coordinator

WIE R8

WIE addresses the following issues in Science & Engineering:

- - how to prepare girls to make an unprejudiced choice of study and careers
- - how to retain women in study and career
- - how to overcome barriers to the advancement of women
- - and how to balance career and family life

Motivation: our society cannot afford to lose women's talents in Science & Engineering

- WIE moved to IEEE Member and Geographic Activities Board
- Most recent **membership data** in R8: **Feb. 2012, 1711**
 - if confirmed, this data shows a decline, action to be taken

WIE AG and SBAG in R8

- There are 24 Affinity Groups (AG) and 49 Student Branch Affinity Groups in R8 (plus 1 pending)
- Most recently approved:
 - German Jordanian University Women In Engineering Student Affinity Group in the Jordan Section.
 - Instituto Superior Tecnico Women in Engineering Student Affinity Group, Portugal Section
 - Ecole Nationale D'Ingenieurs De Tunis Women In Engineering Student Affinity Group in the Tunisia Section.
 - IEEE Iraq Section Women in Engineering Affinity Group.

Activities 2011, plan 2012 - Coordinator

■ Activities 2011

- Monthly WIE Committee conference calls
- Clementina Saduwa Award
- MoU IEEE – IE Business School
- Support to formation of AG and SBAG
- Support to requests of AG and SBAG to WIE
- Solicitation of articles for WIE and regional magazine, newsletter
- Initiate collection of resources for Girls Day

■ Plan 2012

- Panel session at I2MTC in Graz, Austria, organized by Kristen Donnell IMS
- Continuation of Girls Day Resources collection
- All regular activities

Activities 2011 - R8 WIE

■ Selection of activities 2011

- Boutheina Tlili, RIT Dubai, Women in Eng, Science & Tech Forum 2011, Feb. 19
- Dina Masri, Princess Sumaya Univ., WIE Launching Week, Mar. 10
- Reem Turkey, WIE Western Saudi Arabia, WIE Workshop, Mar. 18
- Chioniso Dube, WIE South Africa, Phateng School, 12-Apr
- Ferdinanda Ponci, WIE Germany, Girls Day (engineering for 8th grade girls), Apr. 14
- Hend Alqamzi, WIE UAE University, Robotics Workshop, May 1
- Addei Hijazi, Palestine Polytechnic U., WIE in PPU, 2-May
- Diresdni Reddy, University of Cape Town, WIE Professional Talk, May 6
- (Tiziana Bertoncelli, WIE AG Germany, AG Meeting, 10-Jan 2012)

Time is Moving Fast and waits for no one

What Happens in an Internet Minute?



And Future Growth is Staggering



Thank You for Your Kind Attention

a.elmoussa@ieee.org

Questions/Comments

