





Tallinn, Estonia
IEEE R8 Committee Meeting

IEEE Region 8 Director's report



Marko Delimar
6 October 2012



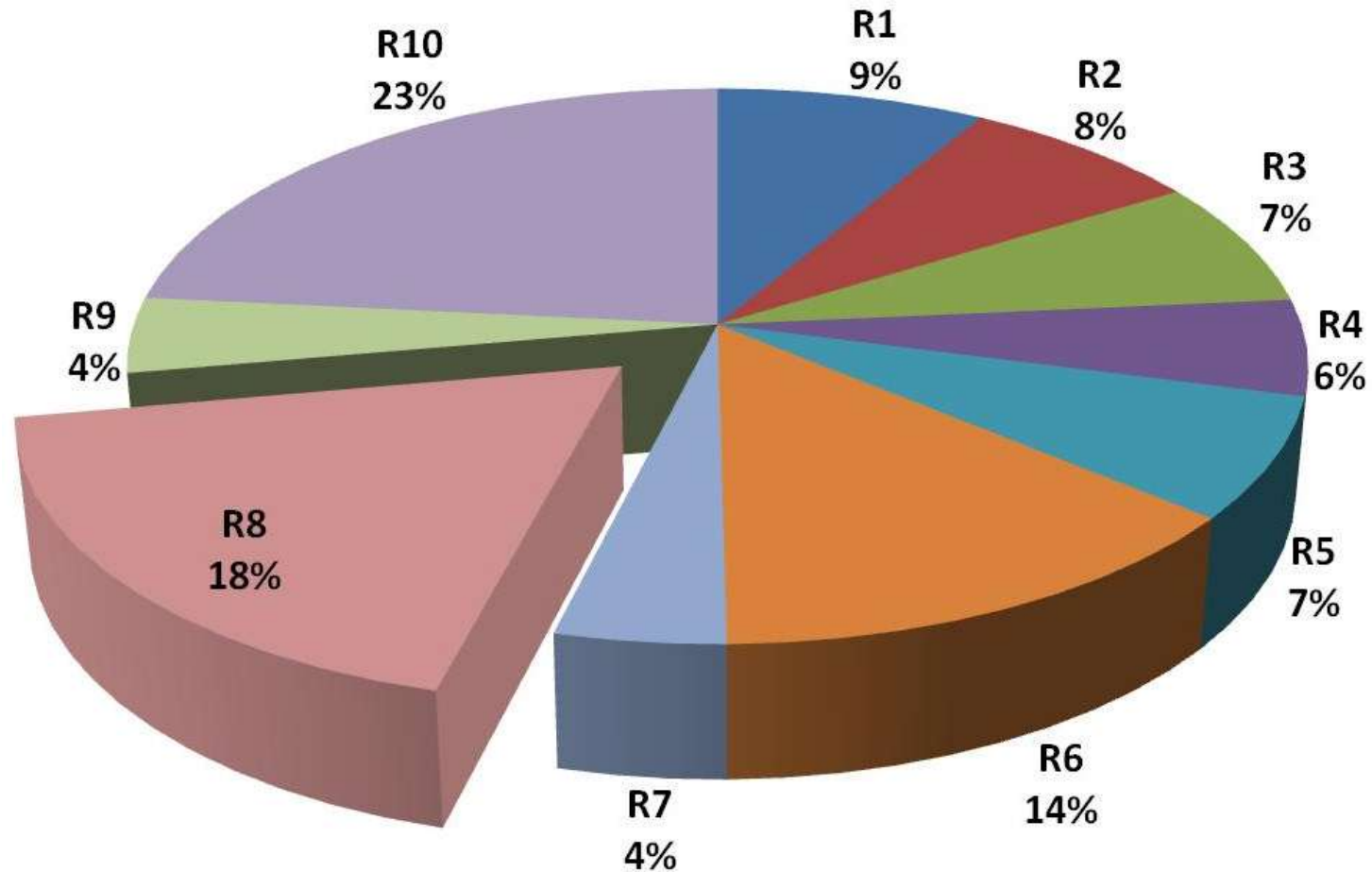


KEY FACTS AND FIGURES

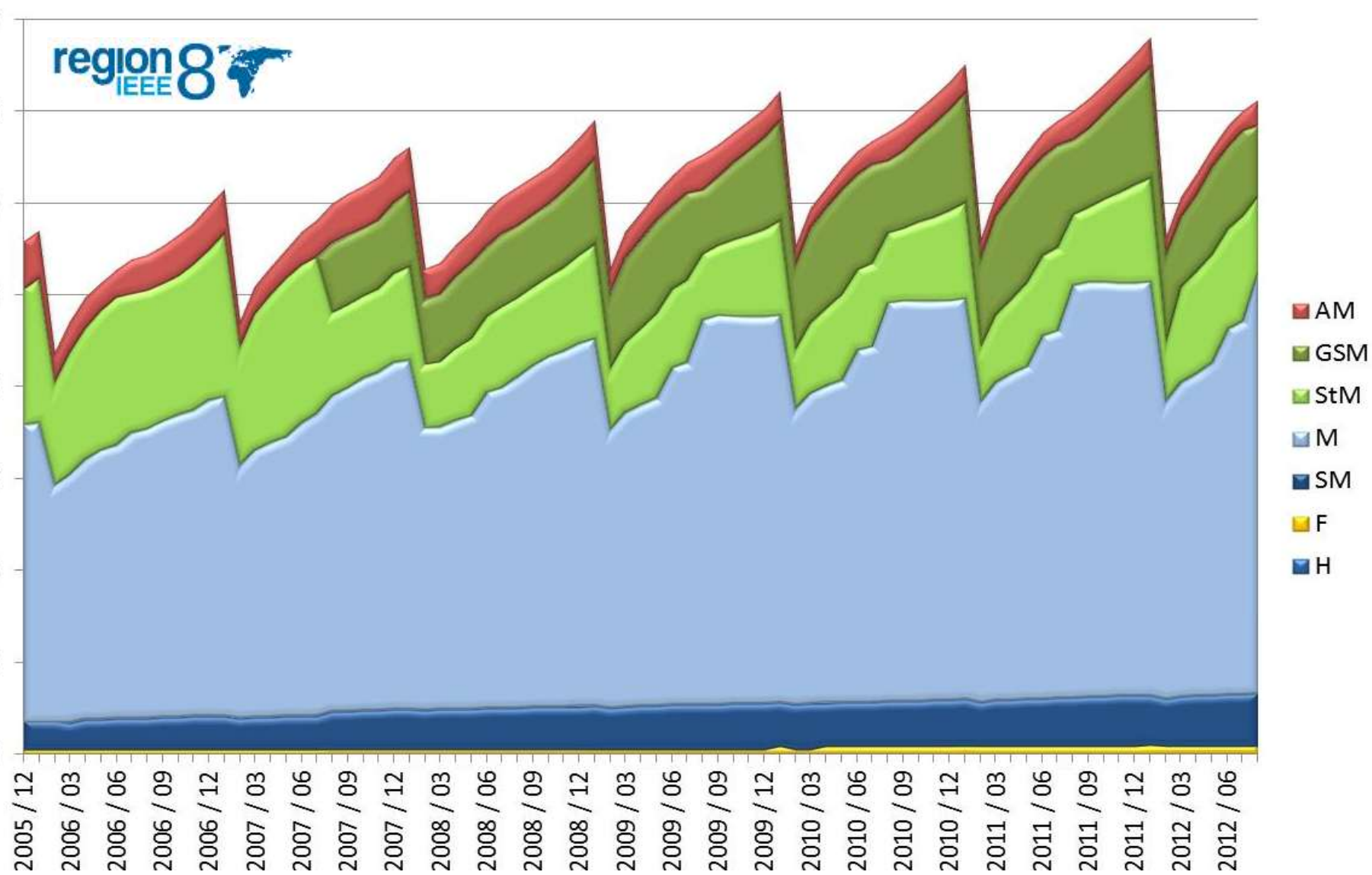
The World



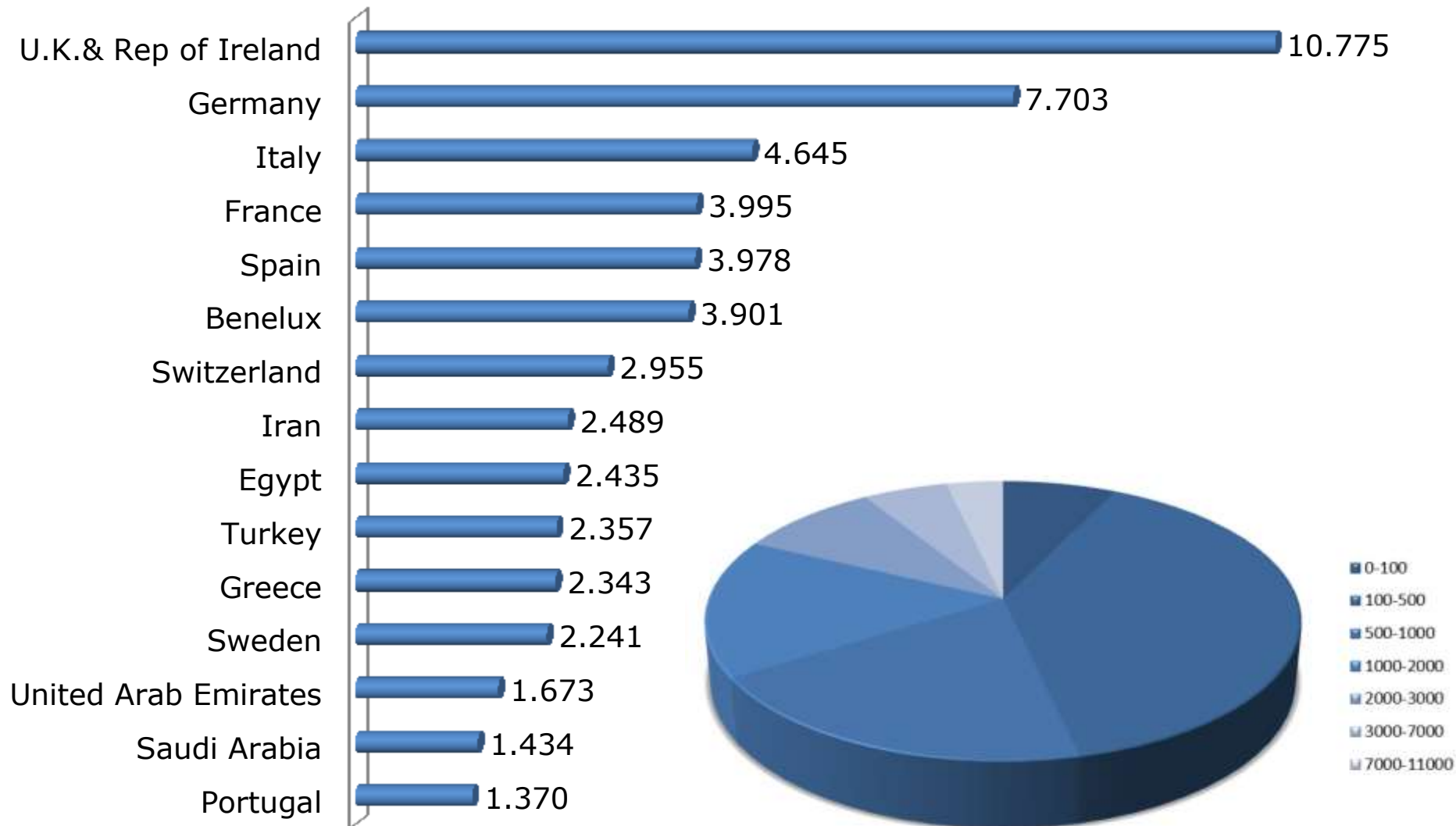
Percent of total IEEE Membership by Region



Membership Dynamics



Total Membership By Section: Dec. 2011



Membership Alert - Region 8

- 23,233 members' service deactivated in Feb 2012
- 31% of Region 8's the total membership

(over past five year, R8 has averaged 25% of the total membership deactivated in February)

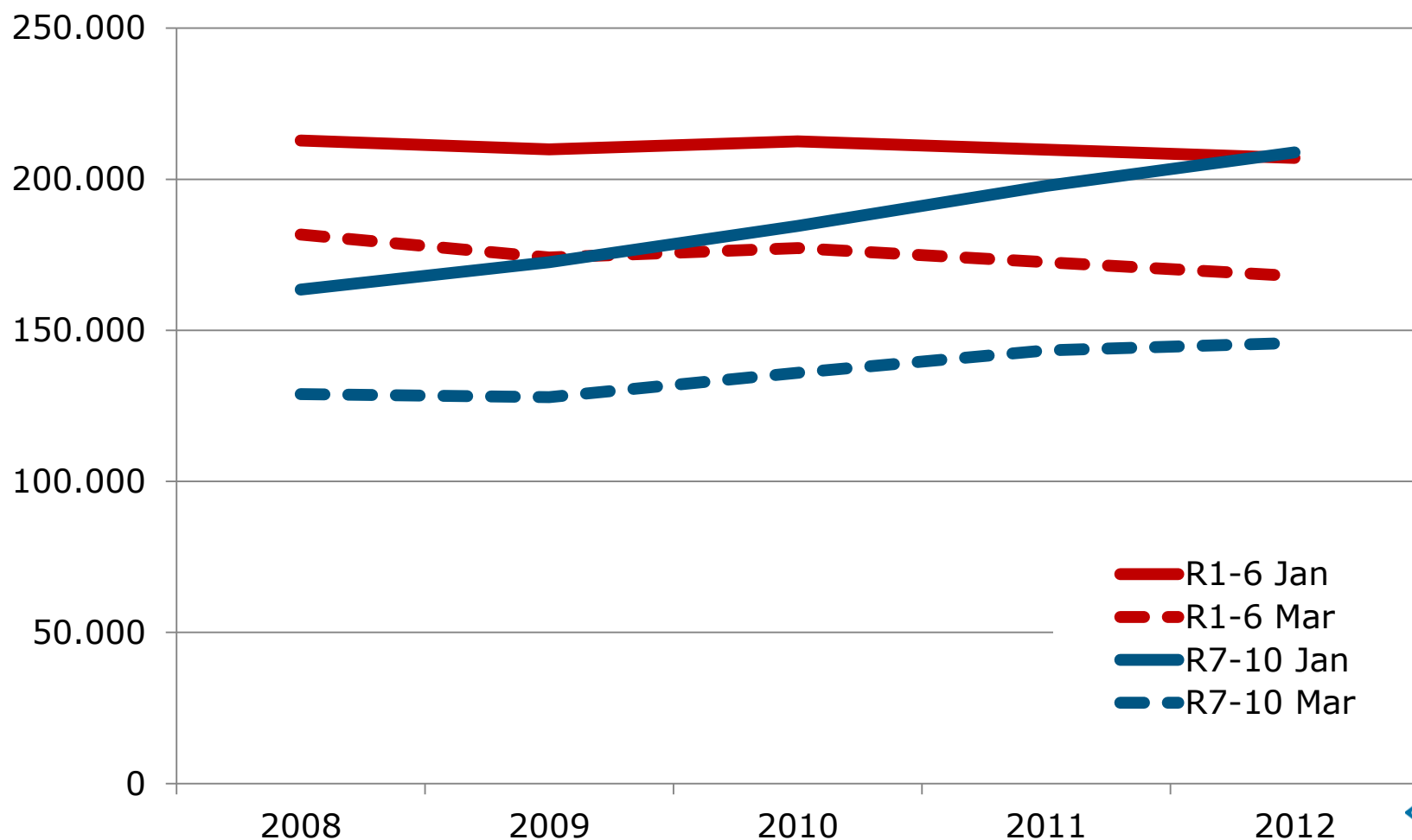
Service Deactivations 2012 vs. 2011		
	Higher Grade	Student Grade
Region 8	+ 1,848 + 15%	+ 307 + 5%
IEEE	+ 6,557 + 10%	+ 4,168 + 8%

R8 Active Membership	JAN '12 YoY	FEB '12 YoY
Total Membership	+ 2,956 members 3.9% growth	+ 305 members 0.5% growth
Higher Grade members	+ 1,948 members 3.7 % growth	+ 5 members 0% growth
Student Grade members	+ 1,008 members 4.5% growth	+ 300 members 1.8% growth



Without an
Arrears-recovery
effort by
all Sections
(in conjunction with HQ)
**Region 8's
membership will
go into decline**

US vs. non-US Membership (before and after the service deactivator)



Several questions

- **How well do we know our members?**
- **What can we do to increase member satisfaction?**
- **What can we do to increase member/volunteer engagement?**
- **What can we do to increase the visibility of IEEE OUs (Sections)?**

- **Some of these important questions will be discussed during the**
 - **MGA presentation**
 - **afternoon workshops.**

Organizational Units – 2011

- **56 Sections**
 - a few new ones
“in formation”
- **6 Subsections**
 - 2 outside Sections
- **495 Society Chapters**
- **57 Affinity Groups**
- **342 Student Branches**
- **69 Student Branch Chapters**
- **40 Student Branch Affinity Groups**

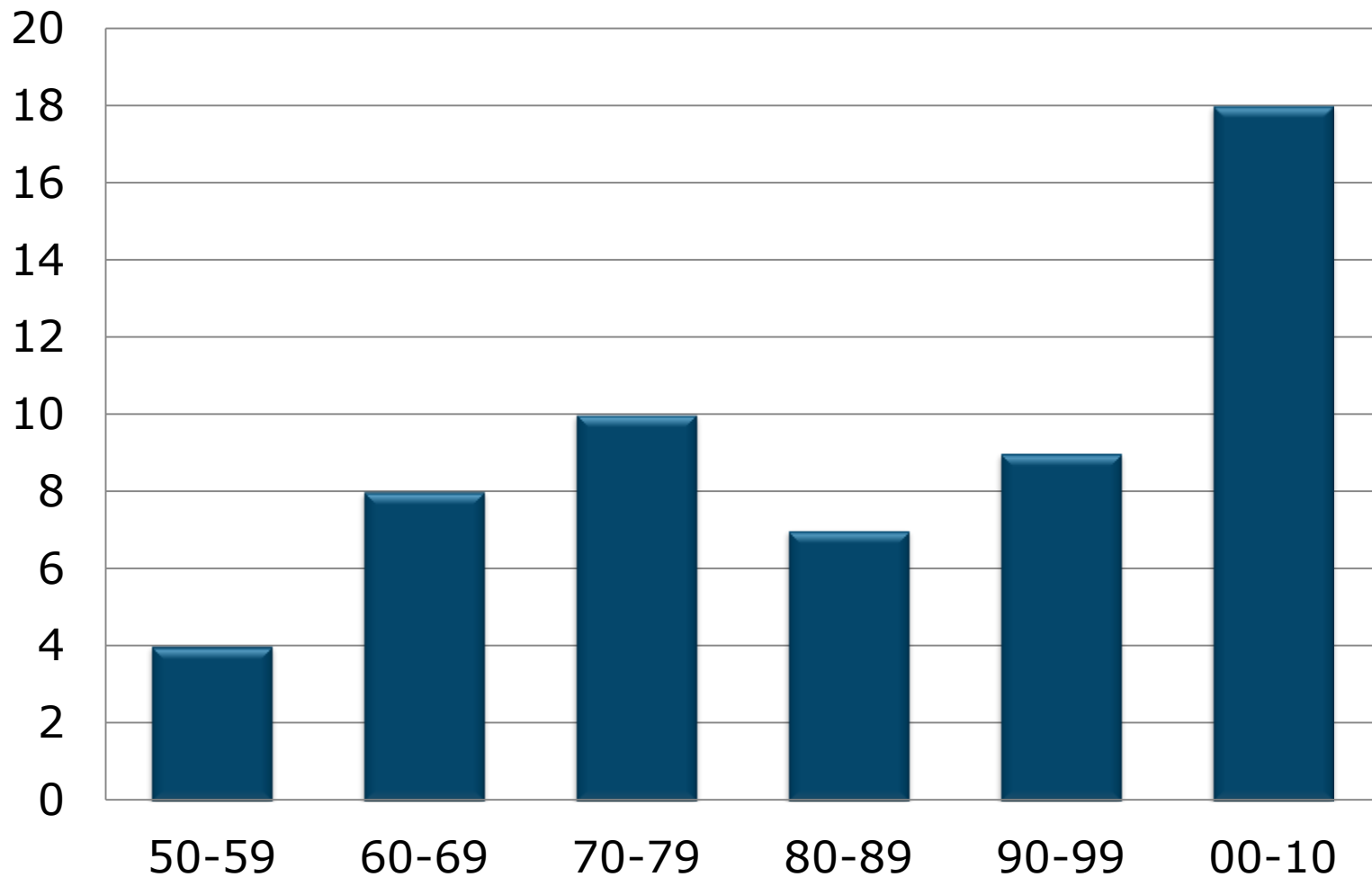


Organizational Units – 2012

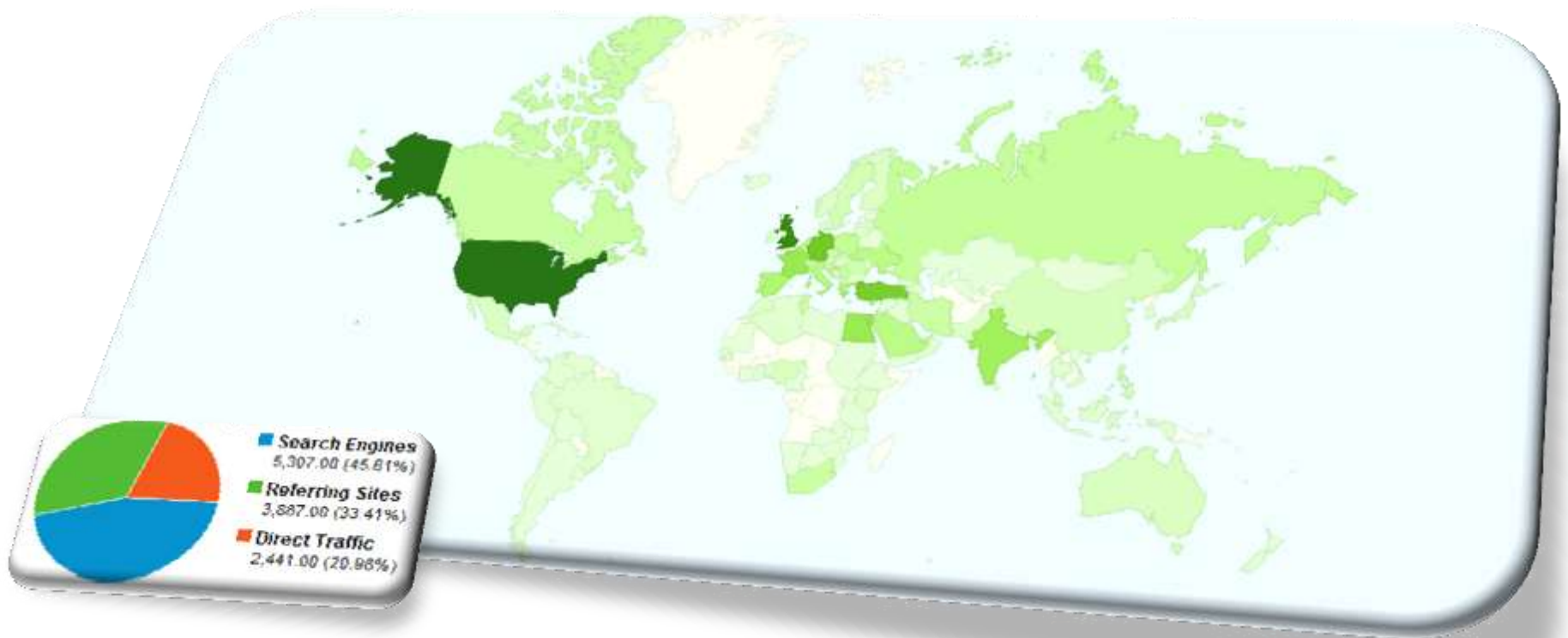
- **56 Sections**
 - a few new ones
“in formation”
- **10 Subsections**
 - 6 outside Sections
- **540 Society Chapters**
- **67 Affinity Groups**
- **406 Student Branches**
- **102 Student Branch Chapters**
- **54 Student Branch Affinity Groups**



Rate of Section Formation



R8 website – www.ieee.org/r8



Please update content!





REGION 8 COMMITTEE

Region 8 Committee Composition

- **Marko Delimar, Director**
- **Martin Bastiaans, Director-Elect**
- **Józef Modelski, Past Director**
- **Brian Harrington, Treasurer**
- **Costas Stasopoulos, Secretary**
- **Ali El-Mousa, Vice Chair - Member Activities**
- **Elias Nassar, Vice Chair - Student Activities**
- **Saurabh Sinha, Vice Chair - Technical Activities**



■ **The Region 8 Section Chairs**

■ **Appointed Members**

What Does the Region Committee Do?

- **Conducts two annual meetings of the Region leadership**
 - **Used for coordination of the Region business and for TRAINING**
- **Supports the activities of the local geographical units**
- **Coordinates meetings for technical and professional purposes throughout the Region**
 - **Including student events**
- **Coordinates activities between R8 entities and OUs from outside the Region**
- **Engages in member development**



REGION 8 COMMITTEE MISSION AND VISION

Vision of Region 8 Committee

- **Ensure that Region 8 is an effectively organized, dynamic and influential entity, recognized as a leading and esteemed part of a truly transnational IEEE, with IEEE benefits equally available to all members**



Mission of Region 8 Committee

- **To serve the needs of the members of the Institute, the profession and society at large, by enhancing and supporting the IEEE's Organizational Units and their activities within Region 8**



Key steps to Realize the Mission

- **Provide a platform for coordination, motivation and interaction among R8 units**
- **Provide a link between the Region and other IEEE organizational units**
- **Work to achieve smooth and effective operations in different countries**
 - **recognizing cultural differences, and effectively cooperating with national societies and other organizations**
- **Expand IEEE presence and activities to new areas (geographic locations) in R8**
- **Promote the transnational nature of IEEE within the Region and the Institute**



KEY CHALLENGES -- UPDATE --

Region 8 Primary Challenges

At the beginning of 2011, we identified three primary challenges:

- 1. Africa**
- 2. Cooperation with European agencies**
- 3. Conferences**

Work in progress:

- 1. IEEE Ad Hoc Committee on Activities in Africa**
- 2. Ad Hoc group on European activities (in formation)**
- 3. Region 8 Conference policy/activities**

R8 Conferences

- EuroCon
- MEleCon
- AfriCon
- EnergyCon
- HistelCon



- Approximately 300 IEEE conferences are held in Region 8 every year
 - Most are technically co-sponsored

IEEE Conferences in R8 (partial view)



IEEE Conferences in R8 (partial view)

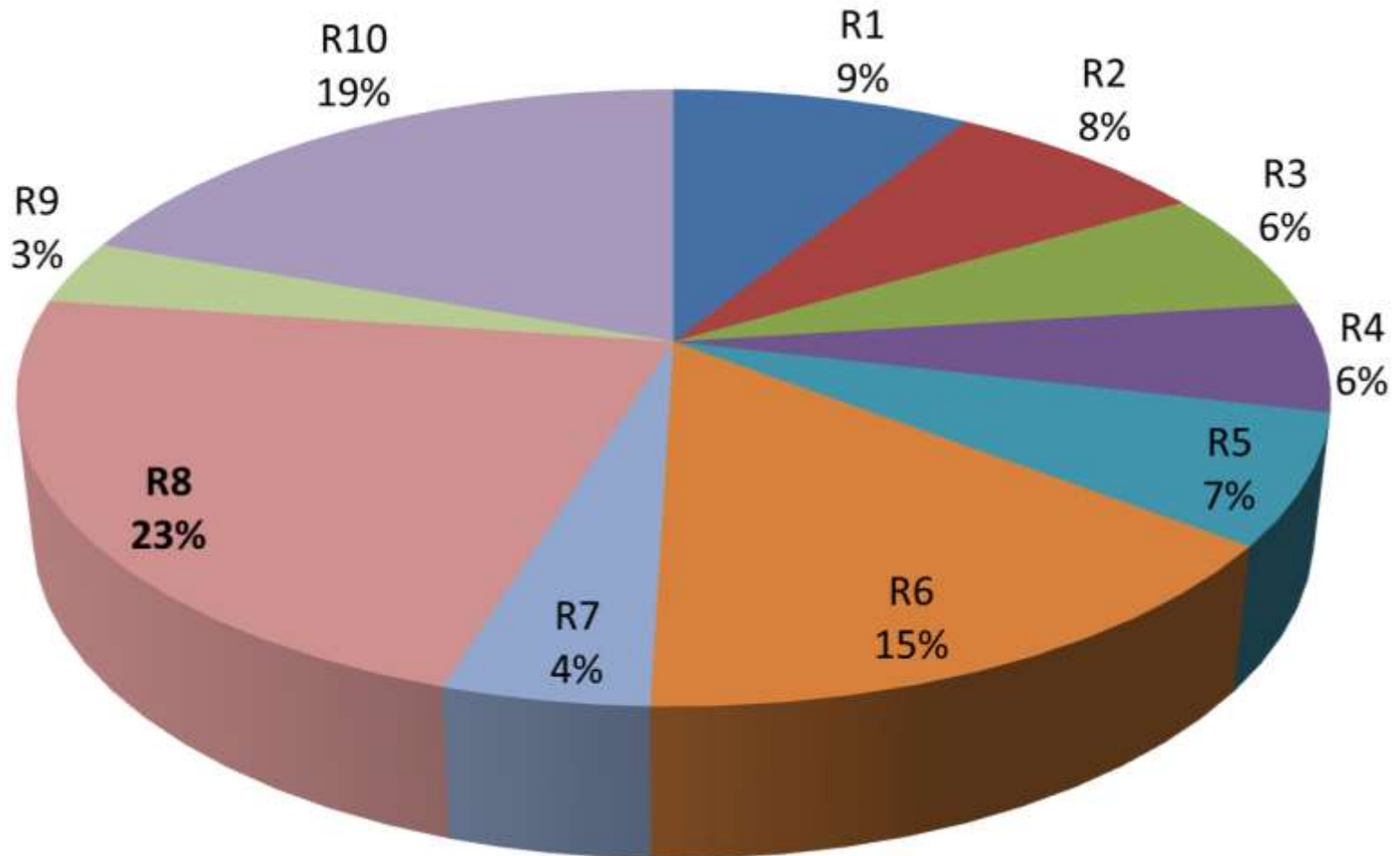


Region 8 and IEEE Societies

- **2011/2012 priority**
- **Region 8 has been working to establish close relations and collaboration with IEEE Societies in working towards the increase of chapter activities and membership**
- **R8 Chapter Coordination subcommittee includes representatives from most IEEE Societies**

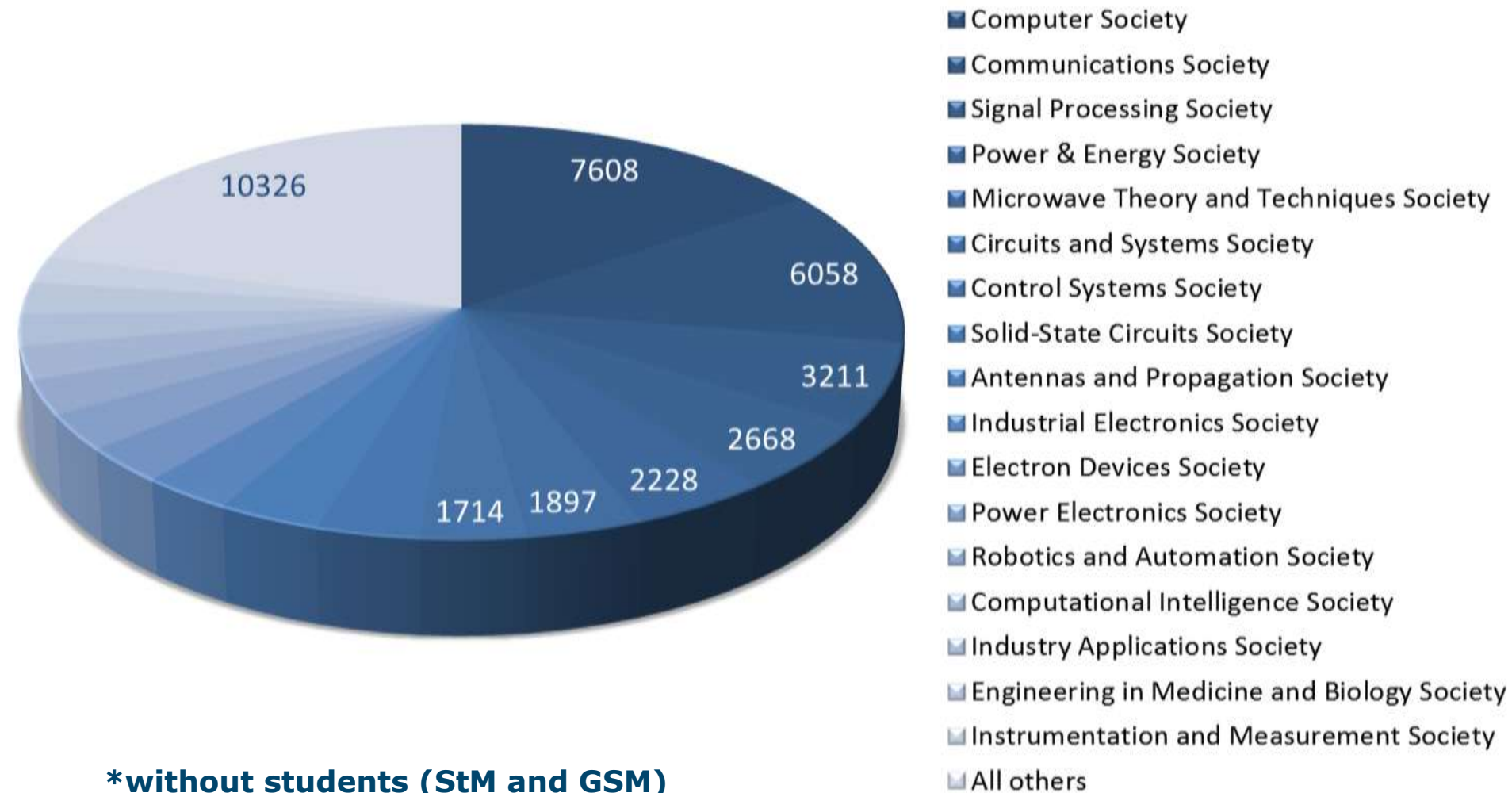
Society memberships* by Region - 29 Feb

220127 total, 49451 in Region 8



Region 8 Society memberships* - 29 Feb

(listed societies have over 1000 members)





RECENT DEVELOPMENTS AND ACTIVITIES

2012 IEEE Annual Election

IEEE President-Elect, 2013

- J. Roberto B. de Marca
- Tariq S. Durrani

IEEE Region 8 Delegate-Elect/Director-Elect, 2013-2014

- Saurabh Sinha
- Costas M. Stasopoulos

IEEE Technical Activities Vice President-Elect, 2013

- Vincenzo Piuri
- Jacek M. Zurada

IEEE Open Access Journal

- **In 2013, IEEE will introduce a new rapid-decision, open access mega journal spanning all IEEE fields of interest**
- **All articles will be author-pays**
- **This new journal is designed to be inclusive in scope and application focused**
- **The journal is fully open access and will be available online only**
- **For more details:**
http://www.ieee.org/publications_standards/publications/authors/open_access.html

Summary of *new* IEEE conference policies announced

- **IEEE Conference Exchange (ICX) launched in June 2012**
 - Streamline of conference organizational activities
 - Includes Conference Information and MoU
- **Conference Quality Team**
 - Crosscheck
- **NetSuite for financial reporting**

Potential Changes to Conferences Policy

- **Removal of acquisition money for financially sponsored conferences**
 - **Already removed for Technically co-sponsored**
 - **Some Societies already removed this**

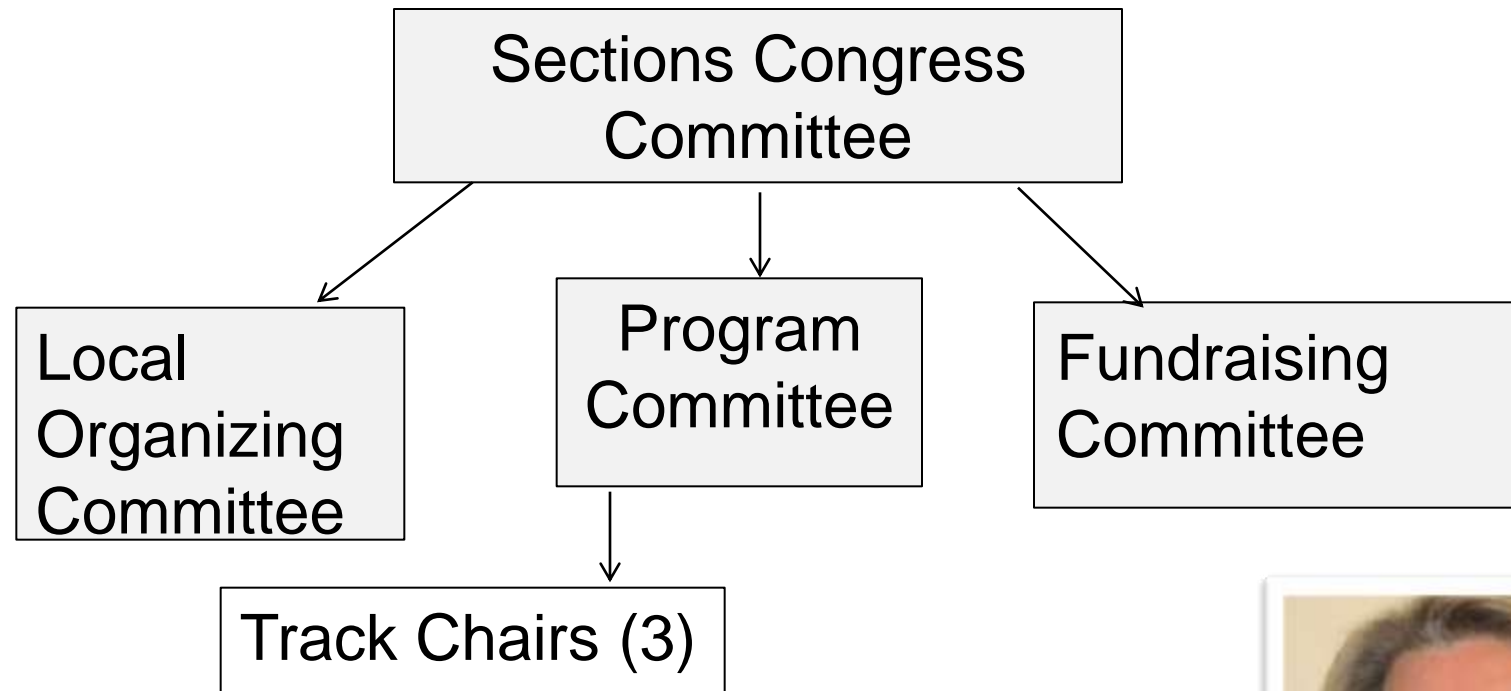
- **Charge of US\$500 for technical co-sponsorship and US\$15 per paper for quality checking**
 - **Screening of papers to guarantee quality**
 - **Increase income for IEEE**

IEEE Sections Congress 2014

- **Amsterdam, NL**
- **22- 25 August**



Sections Congress Committee Structure



Magdalena Salazar Palma
SC2014 General Chair



IEEE Region 8 Student Branch and GOLD Congress



Madrid, Spain
25-28 July 2012



*Engineering the Future
and Beyond*

IEEE Day
2 October 2012



1 day
for IEEE Day 2012

IEEE touches everyone in their everyday lives
because technology touches everyone in their
everyday lives.

Membership(s) and Subscriptions(s) Auto Renewal

- Offers convenient way for IEEE Members and Society Affiliates to automatically renew their IEEE Membership(s) and Subscription(s) before they expire.
- Benefits include:
 - increase in satisfaction with renewal process via automated processing that does not require manual effort;
 - increase in member and society affiliate retention via convenient way to automatically renew existing memberships and subscriptions on an annual basis;
 - reduction in renewal effort and associated expenses.
- Available to Associates, Members, Senior Members, Fellows, Standards Association Members, and Society Affiliates.
- Offered beginning December 2012. The first auto renewals will be processed in October 2013 for the 2014 membership year.

Digital 'IEEE Spectrum' for Students

- 2013 Membership Year (August 2012)

- Students and Graduate Students default changed from print to digital delivery of IEEE Spectrum and The Institute
 - Available online and through mobile platform apps
- Option of receiving print version for +US\$5.00 or combo (print & digital) +US\$14.95
- Digital delivery start date
 - Renewing students, January 2013
 - New students, upon joining after 16 August



Why?

- Students who had postal mail issues in the past will receive it directly, with the digital advantage of more interactive content
- Student growth (now 27% of membership) can now be viewed as universally positive to IEEE

Section Reserves/Revenue Sharing

Proposal:

- **Starting in 2013 all Sections will participate in revenue sharing**
- **Funds will not be taken out from Section accounts, unless necessary**
- **A certain amount of funds will be blocked on each Section's bank account**
- **Sections will be informed each year about the amount of blocked funds**

Section registration/legal issues

- **Important issue in R8**
- **Directly effects section/field operations**
- **Complex situation in IEEE Turkey Section**
- **...**

- **Special Session on Sunday,
7 October 2012**
- **Eileen M. Lach,
IEEE General Counsel and
Chief Compliance Officer**



CB Card Program Changes

- **CB Cards in Regions 8-10 are being discontinued in early 2013**
- **Replacement plan is being derived by Treasury and Controllers**
- **Additional detail available**



IEEE Concentration Banking Card Program (CB Card)

Recent Development

- **JP Morgan Chase has informed IEEE that the bank is conducting a comprehensive review of IEEE's CB Card Program, and similar programs in place with all its other customers.**
- **The bank refers to a card program that involves the issuance of USD cards to individuals who reside outside the U.S., like the IEEE CB Card Program, as the "Indirect Issuance Model."**
- **After careful consideration, JPM Chase has determined that the "Indirect Issuance Model" presents potential U.S. and foreign legal compliance risks that the bank is no longer willing to accept...the primary concern is the bank's exposure to money laundering activities.**

IEEE Concentration Banking Card Program (CB Card)

Recent Development (continued)

- **The bank is learning that foreign regulators are becoming increasingly more sensitive about the use of foreign issued cards by residents in their jurisdiction.**
 - **Cards issued under the Indirect Issuance Model may become subject to the laws and regulations of the foreign jurisdiction...thereby placing a significant strain on the bank's ability to effectively support compliance monitoring programs.**
- **JPM Chase has informed IEEE that it will be terminating cards issued under the "Indirect Issuance Model" within the next 6 months.**
- **This means that cards will no longer be issued for use with Custody accounts for Geo Units in Regions 8, 9, and 10, and the program will cease within the next 6 months.**

IEEE Concentration Banking Card Program (CB Card)

Timeline / Next Steps

- **Program termination dates**
 - **12/14/12 – Honduras, Ecuador, Nigeria, Pakistan(as per JPM Chase's requirements)**
 - **3/14/13 – All other Non-US countries**
- **Next Steps**
 - **Determine local bank account availability for affected countries/Geo-Units with consideration given to registration requirements.**
 - **Re-establish process to wire transfer funds directly to local bank accounts maintained by the Geo-Units.**
 - **Maintain custody account balances and support for Units that participate in the membership renewal program via Custody account processing.**

Region 8 Section Bylaws Discussion

**How many IEEE Region 8
Sections have bylaws?**

Sixteen R8 Sections with Bylaws on File with MGA

BULGARIA	PORTUGAL
CZECHOSLOVAKIA	REPUBLIC OF MACEDONIA
FINLAND	RUSSIA (NORTHWEST)
GERMANY	RUSSIA (SIBERIA)
JORDAN	SLOVENIA
KUWAIT	SOUTH AFRICA
LEBANON	SWEDEN
NIGERIA	U.K.& REP OF IRELAND

Section Bylaws -

- **Discussion to eliminate the need for section bylaws (exceptions where required by local law)**
 - **RAB (now MGA) Operations Manual provides guidance for Section management**
 - **Developing and maintaining section bylaws is an unnecessary use of both volunteer and staff time**
- **Changes to RAB (now MGA) Operations Manual approved and updated February 2006**

Section Bylaw – Section 9.4.E

E. Section Bylaws

- 1. Section Bylaws are not required. All Sections will be required to operate in accordance IEEE Bylaws, Policies and the MGA Operations Manual.**
- 2. Sections are permitted to maintain an addendum or separate governance document.**
 - a. Those Sections maintaining an addendum or separate document, which includes exceptions to the requirements of the MGA Operations Manual, will submit a request for exception to the Region Director who will present the item to the MGA Board for action.**
 - b. Those Sections maintaining an addendum or separate document which includes additions or changes to the requirements of the MGA Operations Manual, and where those changes do not pose a conflict, may submit a request for approval to the Region Director.**

Going Forward – Section Bylaws

- 1. Clarification of original intent for section bylaws to be discussed by MGA Board**
 - Current wording is not definitive**
 - Eliminate confusion and ensure consistency in message**
- 2. R8 to confirm list of sections with bylaws**
- 3. Regions & Staff to identify gaps resulting in development of separate section bylaws**

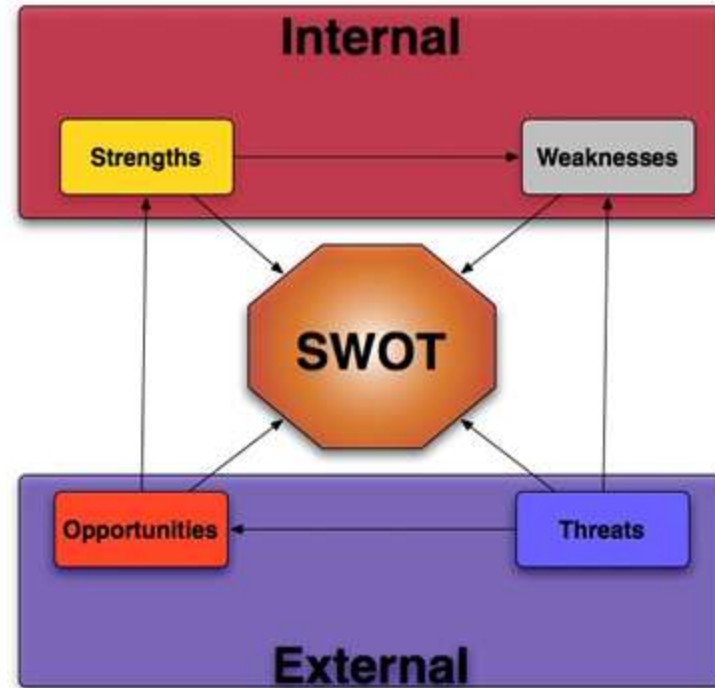
Officer's Term Limits

During the 25 June 2011 meeting the MGA passed the following motion:

- 1. All Section officers must be elected. This election can be conducted annually or every two years. An individual may serve two consecutive terms of office.**
- 2. A lifetime term limit shall be established for Section officers. An individual shall not serve in a position for more than 3 terms (i.e. 6 years) provided there is at least a one term break.**
- 3. The MGA Operations Manual to be revised to incorporate text which explains how an individual may be removed from the position and how an individual can be suspended from office.**

2012 IEEE Region 8 Events

3-5 Feb	OpCom Meeting, Athens, Greece
25-28 March	IEEE MELECON 2012, Yasmine Hammamet, Tunisia
30 Mar-01 Apr	Committee Meeting, Berlin, Germany
31 Mar	50 th Anniversary Celebration Event, Berlin, Germany
26-28 Aug	Student Branch and GOLD Congress, Madrid, Spain
5-8 Sep	IEEE HISTELCON 2012, Pavia, Italy
9-12 Sep	IEEE ENERGYCON 2012, Florence, Italy
6-7 Oct	Committee Meeting, Tallinn, Estonia



AN ABBREVIATED S-W-O-T ANALYSIS -- UPDATE --

Strengths

- **Strong and dedicated volunteer corps**
- **Volunteer leadership development and succession planning**
- **A large number of active and vibrant organizational units**
- **Diversity of Members and Sections**
- **Tradition of exchange of ideas and best practices**
- **Established infrastructure for Region's activities, including conducting conferences, workshops, and student activities**

Weaknesses

- **The size of the Region is incongruous with the resources available for its administration**
- **IEEE market share in key areas is low**
- **There are significant areas within the Region where IEEE visibility is very low**
- **The disparity between different Sections in the Region does not support some “one size fits all” practices of IEEE**
- **The operations of the Region are not optimized to take advantage of available cooperation and funding opportunities**

Opportunities

- **Cooperation with local associations, governmental/intergovernmental organizations, and educational institutions**
- **Cooperation with EU institutions, especially in the areas of Standards, Education and Accreditation**
- **Member recruiting drives**
- **Development of new IEEE OUs**
 - This activity requires area-specific activities and creative solutions
- **Conference activities in R8**
 - Toward IEEE-owned conferences and surplus generating conferences for R8
- **Accreditation opportunities (e.g., GCC)**

Threats

- **Loss of members to aggressive recruiting by other local and global associations**
- **Expanded activities of commercial publishers and conference providers in IEEE Fields of Interest in the Region**
- **Perception of IEEE as "US-centric"**

Questions? Comments?



Thank you!

