

IEEE R8 meeting
2014 Spring

4-8 April, 2014
Budapest, Hungary

Hotel Intercontinental
Budapest



DESTINATION

BUDAPEST, HUNGARY

Budapest – the capital city of Hungary

- **Pearl of the Danube**

- **Population: 1,7 million**

- **Magical Panorama: UNESCO World Heritage**

- **Internationally recognized cultural events & festivals**

- **Easy of approach, direct daily flights:**

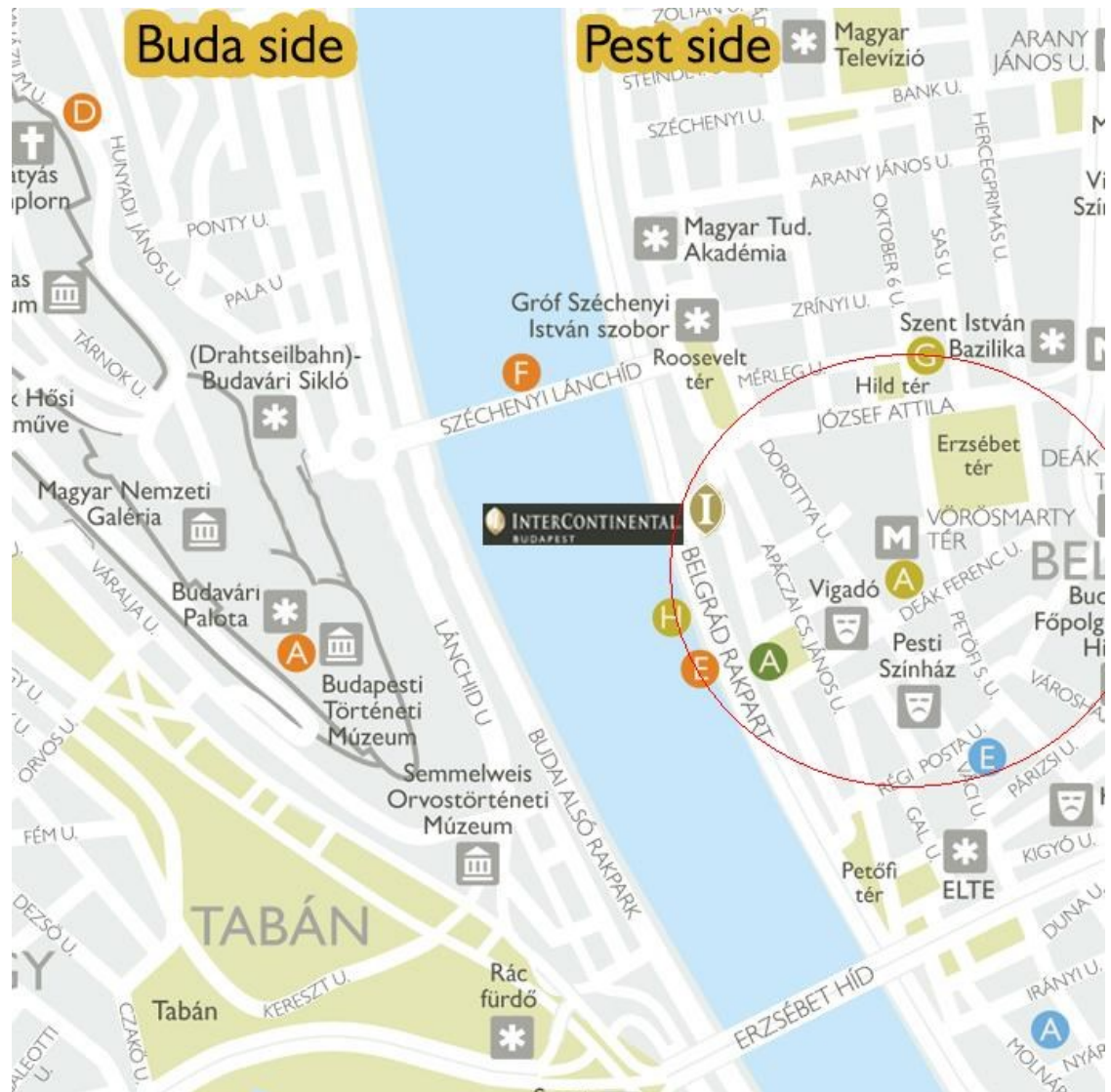
- **London – 5**
- **Paris – 4**
- **Brussels – 5**
- **Prague – 4**



SCHENGEN VISA IS REQUIRED!

BUDAPEST MAP

- **Downtown location on the Pest side – opposite to the former Royal Castle, next to the Chain Bridge**
- **Liszt Ferenc International Airport distance: 23 KM / 15 MI**
- **Time by taxi: 25 Min.**
- **Walking distance to the major sights of the city and main shopping street**



HOTEL AT THE DANUBE BANK



HOTEL FEATURES

- 402 guest rooms
- Wi-fi access in all guestrooms
- All rooms can have Club access
- 18 Suites, all equipped with Nespresso coffee machine
- Group ceiling: max 250 rooms / night
- High Season:
Apr-May-June,Sep-Oct



PRE-FUNCTION AREA



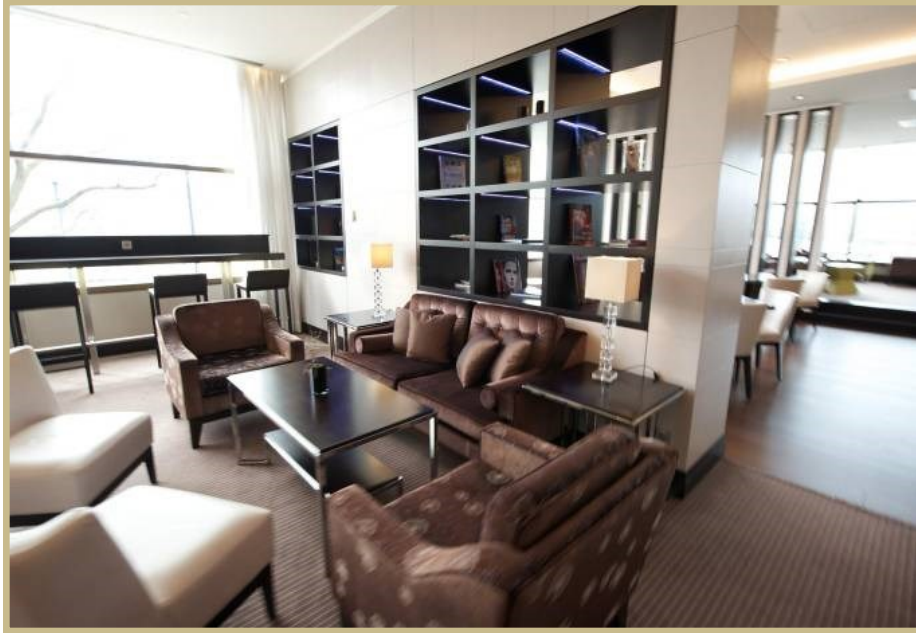
PRE-FUNCTION AREA and PANORAMA II-IV



BALLROOM I-III

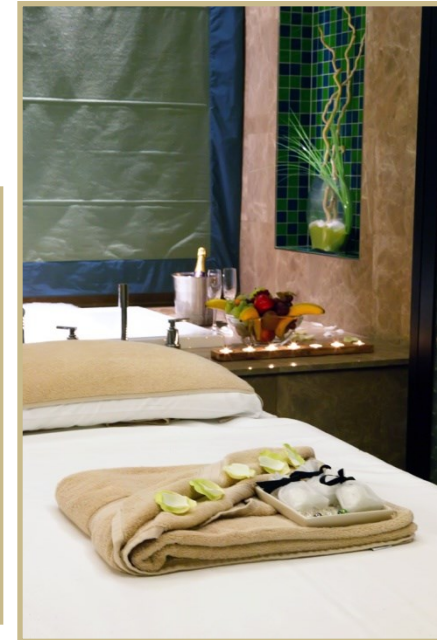


CLUB INTERCONTINENTAL



SPA INTERCONTINENTAL

- 24-hr Fitness
- In-door swimming pool
- Sauna, steam bath
- 4 treatment rooms
- Exclusive Kavizcky products



HIGHLIGHTS OF BUDAPEST



Museum of Fine Arts



Synagogue



Boat trip on the Danube



Opera House



Heroes' Square



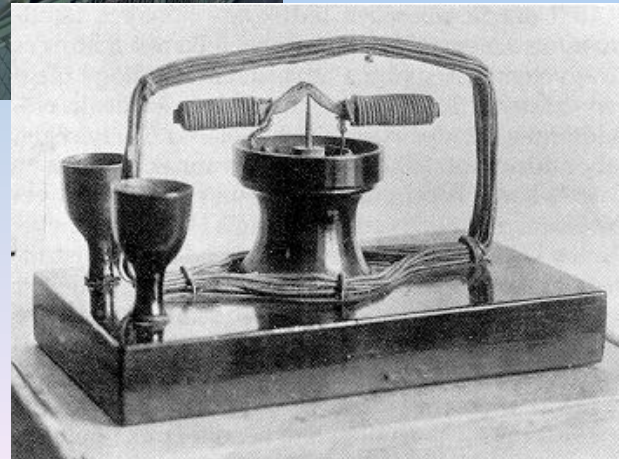
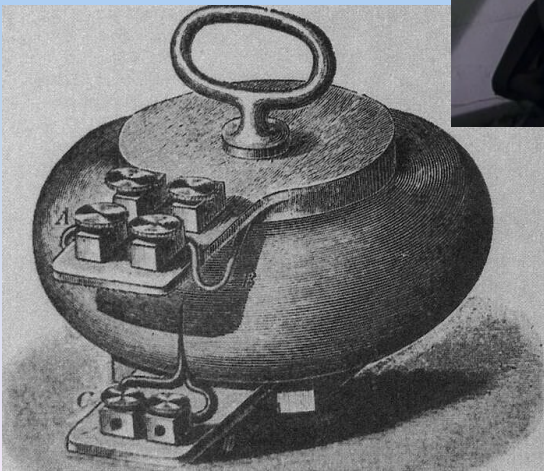
Széchenyi Bath

Introduction of IEEE HS Sister Societies



Presentation of IEEE Milestones

- First transformer
- Early dinamo
- First metro in the continent



THANK YOU FOR
YOUR ATTENTION

