

IEEE Region 8 Meeting 2016 - Porto, Portugal

Porto is the second largest and most significant cities in Portugal, both as to economic activity and cultural life. Porto has a single expression of the historic heritage – which is why the old center of the city was declared a World Heritage Site – and the liveliness of the many establishments which enable the most pleasant way of spending the spare time.

Travel

There are multiples ways to get into Porto: air, train or car.

Airport

In Portugal there are 2 main airports that can be used, in Lisbon and Porto.

Francisco Sá Carneiro (OPO) airport is located at 12 km by car from the **Porto Palácio Hotel** and 16 km from city center.

Airport transfer is provided by underground, bus or taxi. We recommend using the underground because it is simpler, easier and faster (the station is connected to the airport, 1 minute walking).

If you use the underground, use the line **E**, direction “Estádio do Dragão”. You must have a blue card charged with ticket Z4 (total cost about 2.5€). You must exit in the **Casa da Música** station (approx 23 minutes and 12 stops) and the Conference is about 10 minutes walking.

Train

Porto has 2 main stations that are connected with Lisbon and Vigo.

If you use the train, you must get out in the train station **Porto Campanhã** and catch the underground. You can use multiple lines, direction “Aeroporto” **E**, “Senhora da Hora” **F**, “Senhor de Matosinhos” **A**, “ISMAI” **C** or “Póvoa do Varzim” **B**. You must exit in the **Casa da Música** station and the Conference is about 10 minutes walking.

Underground

The underground is the most efficient way to travel in Porto. The closest station to the hotel is **Casa da Música**.

In order to use the underground, you must get **one (1) blue card per person**. Then you can **charge your card** with many trips as you want. You can buy one at the airport or at the underground entrance (ticket machines, where you can find all information that you need).



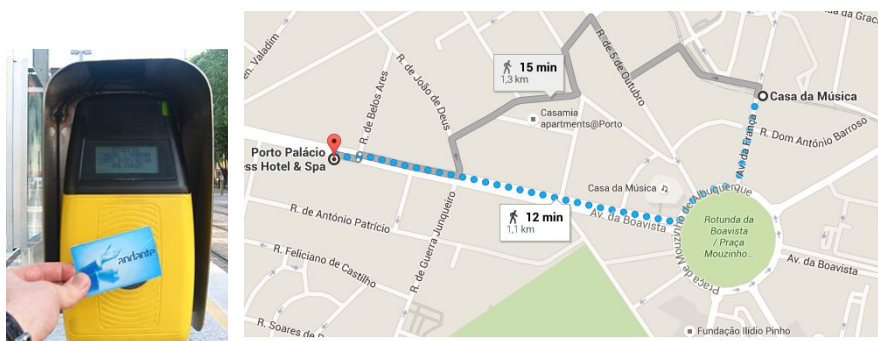
The ticket system works as “rings”.

A ticket is valid for multiples rings (regions) during a **period of time**.

While a ticket is valid, you can travel by train, bus or underground.

Eg. ZGTicket allows to travel in 2 zones (starting in the zone you have validated for the first time that ticket) during 60 minutes. There are more information near the tickets machines about the rings and the ticket you have to buy in order to travel to another station.

VERY IMPORTANT: every time you change line, transportation or vehicle, you **MUST** validate your ticket again!!! There are many validators at the entrance of every station and a green light to indicate that the ticket was activated and is valid.



From the underground station, follow this direction to the hotel: “Avenida de França”, “Rotunda da Boavista” and “Avenida da Boavista”. You may find the map in higher resolution at the end of this document.

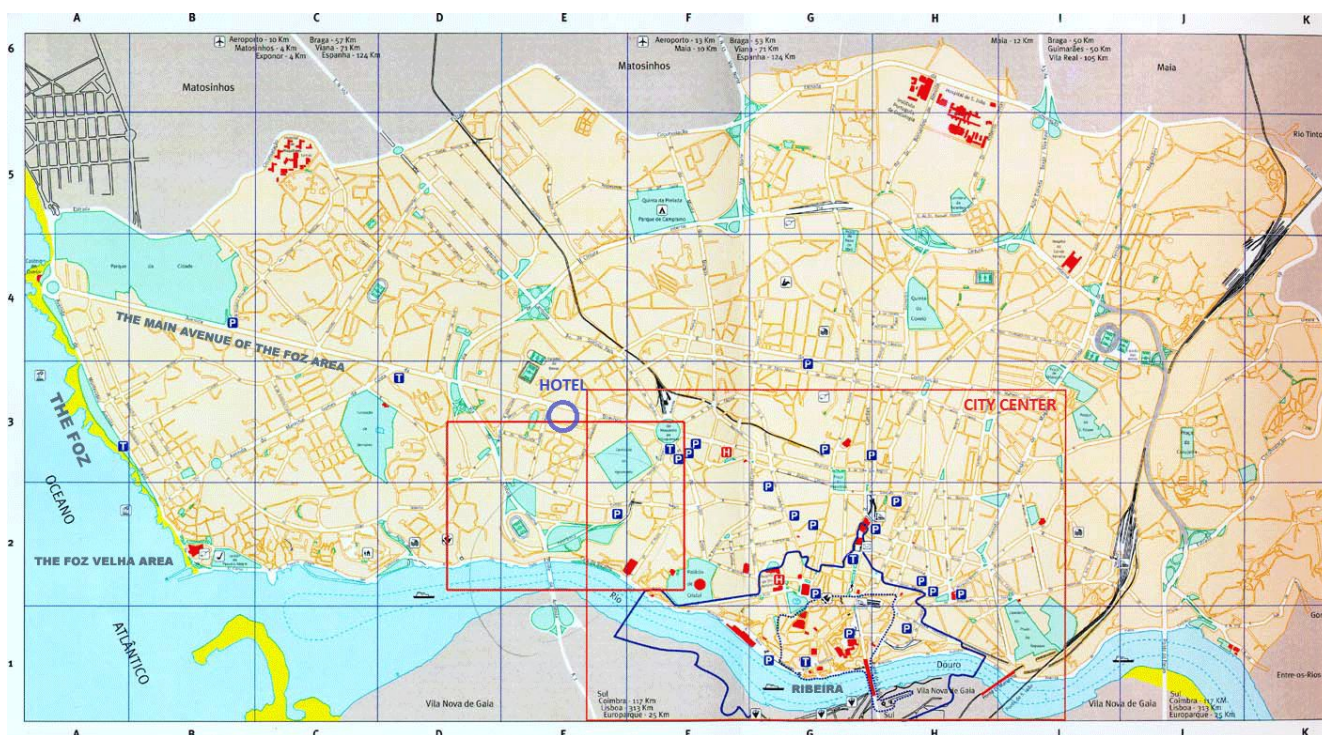
If you have any question, there’s always someone from the security service ready to help you to get your ticket.

City

Porto is a very relaxing city filled with history and excellent places to enjoy. In general people from Porto are very kind and are always available to help if you need. Despite being a relatively safe city, you should always pay attention of your surroundings.

There are many areas that you can visit. You'll be given a tourist guide when you arrive at the airport or hotel, so you can visit what you like most.

Map



(hotel is located at the blue circle. Larger map at the end of this document)

Language & Currency & Energy

Portuguese is the official language. English, Spanish and French are also widely spoken in Porto, so you may find instructions on those languages as well.

The accepted currency is Euro. Almost all places accept credit card.

The current plug is Europlug, Schuko Plug with 2 pins (230V). <https://en.wikipedia.org/wiki/Europlug>

Weather

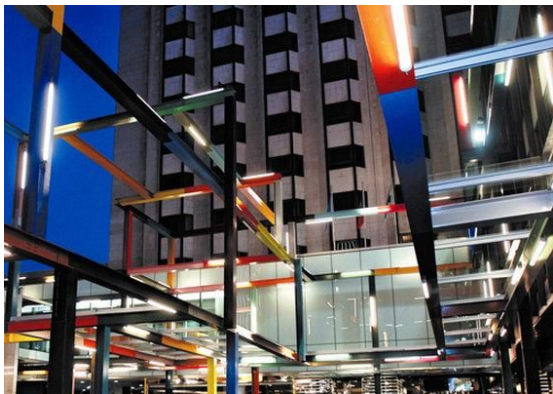
Porto has an enjoyable weather during September, with some fresh wind at the end of the day. Due to its proximity to the Atlantic Ocean you will enjoy an excellent morning breeze and a beautiful sunset. You may find the the table below some statistics on September.

Overall	Sun, no clouds
Temperature High (°C) average	23
Temperature Low (°C) average	13
Precipitation average	0.38 mm
Wind speed average	West 6 km/h day North-northwest 7 km/h night
Sunrise / Sunset	7:24 AM - 7:27 PM
UV Index	4

Accommodation

The conference will take place in the 5* Porto Palácio Hotel.

It is located in the Boavista Avenue, near to the underground and the **Casa da Música** (P[ortugal] - Á[rea] T[errestre]). There are many options for dinner, resting and visiting in that area, you can ask in the hotel for more details.



For more information you can check in the website:

<http://www.hotelportopalacio.com/en/hotel-overview.html>

More Information

You can find more information on these websites:

<http://www.visitporto.travel/Visitar/Paginas/default.aspx>

<http://www.porto-tourism.com/>

<https://www.visitportugal.com/en>

https://www.youtube.com/watch?v=YCOS97q_Yb4

Emergency Contact

Ana Madureira - amd@ieee-pt.org - 00351965847723

Pedro Simeão - pesimeao@ieee-pt.org - 00351913933349

Underground “Casa da Música” to hotel “Porto Palácio”

