

# R8 Role in 2017 New Topics

**Marina Ruggieri**  
*2017 Vice President, Technical Activities*





**NORTH & SOUTH POLES**



**FOOD ENGINEERING**



**DIG ONCE**



**DESIGN 4 ETHICS**



# 2017 TAB AdHoc Committees on the Topics

## FOOD ENGINEERING

John Verboncoeur (Chair), NPS  
Damir Novosel (Vice Chair), PE  
Eddie Custovic, YP Rep  
Melba Crawford, GRS  
Toshio Fukuda, DDX, RA  
Meng Zhen Kang, SMC  
Nigel Lovell, EMBS  
Bruno Meyer, PES, DDVII -el  
Mark Maynard, PSE  
Antonio Rizzi, RFID  
Tomy Sebastian, IA  
Fei-Yue Wang, ITS, SMC  
Daniel Zeng, ITS  
Doug Zuckerman, COM  
Scott Woodhouse (staff)

Adriano Camps (Chair), GRS  
Rafal Sliz, YP Rep  
Samarth Deo, YP Rep  
Claudio R. Brito, EDU  
Paul M Cunningham, SSIT  
Teresa Pace, AES  
Javier Gozálvez Sempere, VT  
Christoph Waldmann, SEN  
Daniel Zeng, ITS  
Kristen Russell (staff)

### STEERING GROUP:

William J. Emery (U. Colorado, Boulder, USA)  
Al Dunlop (Crossbow Consulting, LLC, USA)  
Antonio Quesada (U. Autónoma Madrid, Spain)  
Yubao Qiu (RADI, Chinese Academy of Sciences)  
Julie Friddell (U. Waterloo, Canada)  
Tony Milne (UNSW, Australia), GRS liason to GEO

## NORTH AND SOUTH POLES

Greg Adamson (Chair), SSIT  
Sara Barros, YP Rep  
Ruth Dyer, IM  
Toshio Fukuda, DDX, RA  
Jean-Luc Gaudiot, COMP  
Javier Gozálvez Sempere, VT  
Satoshi Tadokoro, RA  
Mark Vasquez (staff)

## ETHICS

Bai Blyden (Chair), PES  
Paul M Cunningham (Vice Chair), SSIT  
Mohammed El Dallal, YP Rep  
Shashank Gaur, YP Rep  
Claudio R. Brito, EDU  
Paolo Carbone, SYS  
Fred Douglass, COMP  
Harvey A. Freeman, COM  
Alan Rotz, DDVII – PE, *Liaison GPPC*  
Tomy Sebastian, IA  
Christopher Jannuzzi (staff & 3I Rep)

DIG ONCE





## 2017 TAB AdHoc Committees on the Topics



**Food Engineering**  
*John Verboncoeur*



**Dig Once**  
*Bai Blyden*



**IEEE at North  
and South Poles**  
*Adriano Camps*



**Design for Ethics**  
*Greg Adamson*

*Meet the Chairs*

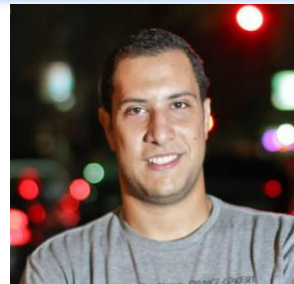
## YPs IN THE NEW TOPICS



**Eddie Custovic**  
**FOOD**  
**ENGINEERING**



**Rafal Sliz**  
**POLES**



**Mohammed El Dallal**  
**DIG ONCE**



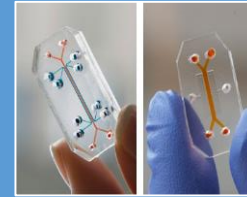
**Samarth Deo**  
**POLES**



**Shashank Gaur**  
**DIG ONCE**



**Sara Barros**  
**DESIGN FOR**  
**ETHICS**



**TA**

**MGA**

**IEEE-SA**

**PSPB**

**EAB**

**IEEE-USA**

**PUBLIC VISIBILITY COMMITTEE**

**GLOBAL PUBLIC POLICY COMMITTEE**



**ARCTIC and  
R8 ANTARCTICA BASES**



**AG, FISH  
ENGINEERING**

**region 8**  
IEEE



**EPP, AFRICA**



**EDUCATION**



**Thank you!**

