



**114th IEEE Region 8 Committee Meeting  
Warsaw - 20-22 of March 2020**



# Warsaw (Warszawa)

Warsaw is the capital of Poland with around 2mln inhabitants, with more than 250 thousand students and with some 40 different universities and academic schools.



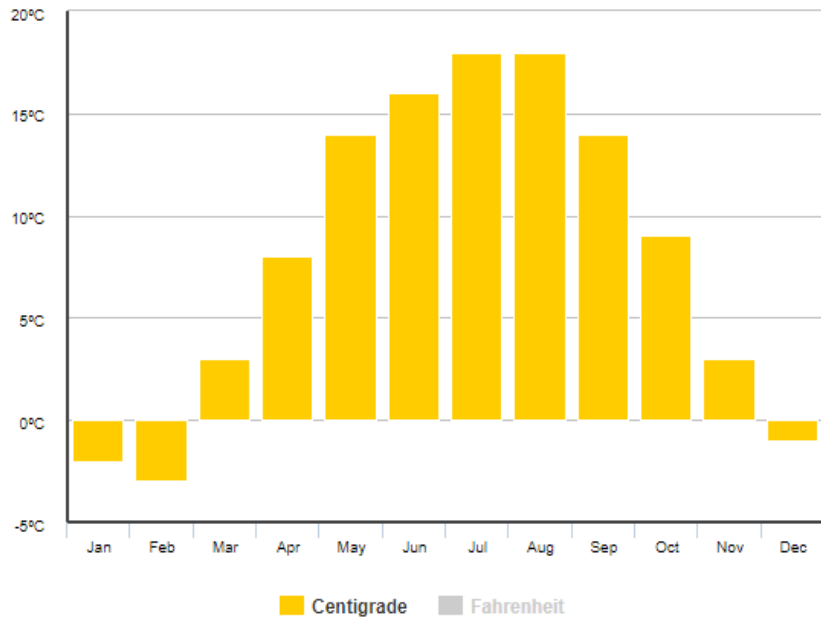
# Things you should know about Warsaw and Poland



- ✓ **Time zone:** Poland belongs to the Central European time zone (GMT + 1 hour / UTC + 1 hour);
- ✓ **International organisations:** Poland is a member of the European Union (EU), the Schengen Area;
- ✓ **Currency:** 1 zloty (PLN) = 100 groszy (current exchange rates: [www.nbp.pl](http://www.nbp.pl))

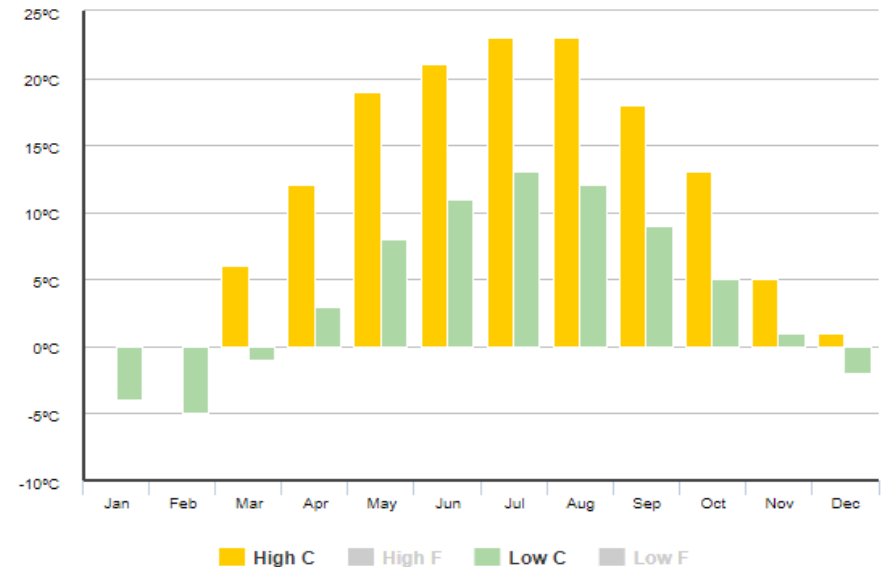
# Climate: The Polish climate is moderate continental

°C °F Average Temperature: Warsaw



	Jan	Feb	Mar	Apr	May	Jun	Jul	Aug	Sep	Oct	Nov	Dec
°C	-2	-3	3	8	14	16	18	18	14	9	3	-1
°F	28	27	37	46	57	61	64	64	57	48	37	30

°C °F Average High/Low Temperature: Warsaw



	Jan	Feb	Mar	Apr	May	Jun	Jul	Aug	Sep	Oct	Nov	Dec
High °C	0	0	6	12	19	21	23	23	18	13	5	1
High °F	32	32	43	54	66	70	73	73	64	55	41	34
Low °C	-4	-5	-1	3	8	11	13	12	9	5	1	-2
Low °F	25	23	30	37	46	52	55	54	48	41	34	28

# How to reach Warsaw ?



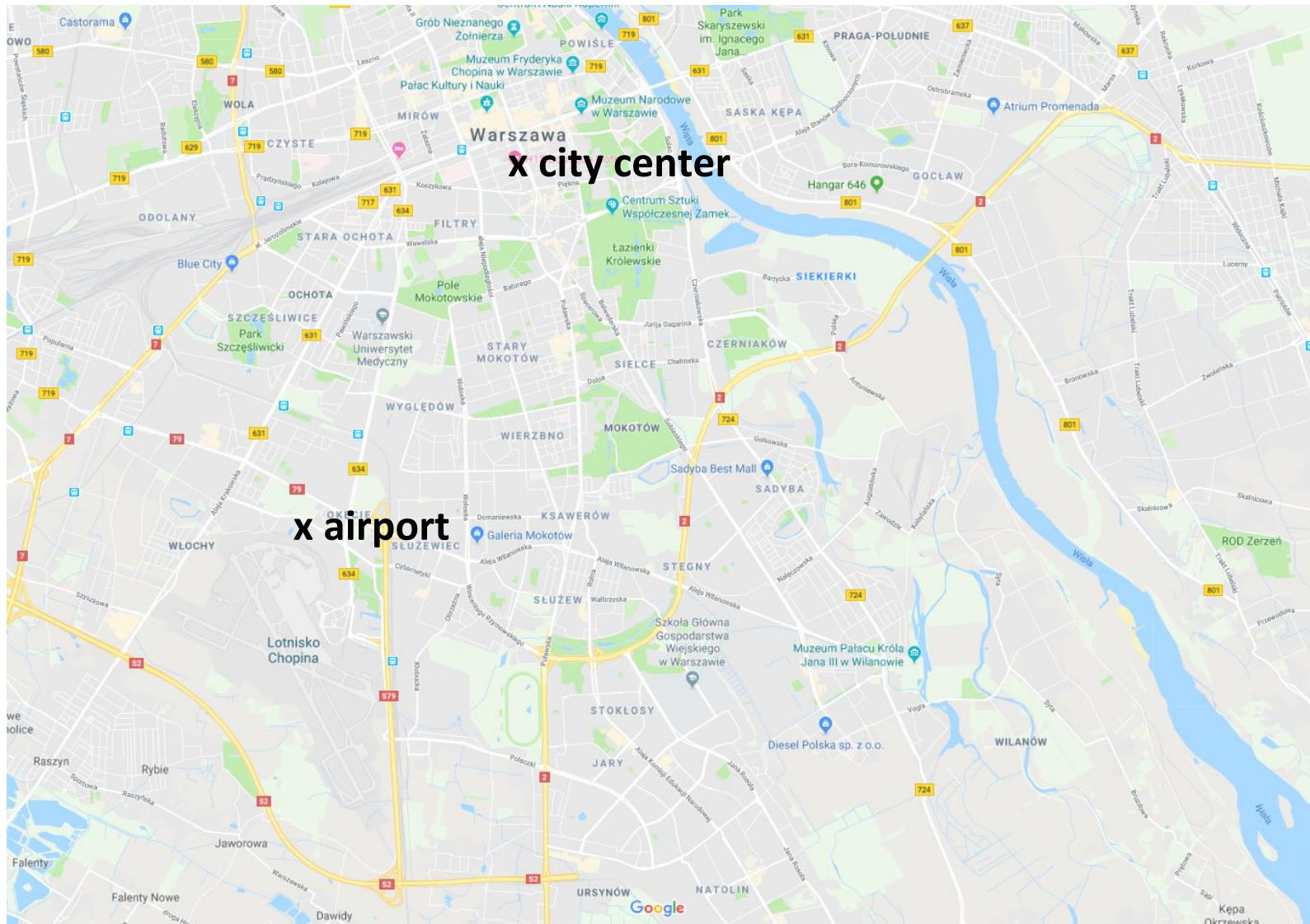
## Direct intercontinental flights

- New York, Chicago, Los Angeles, Miami (USA); Toronto (Canada), Beijing (China), Doha (Qatar), Dubai (UAE), Tokio (Japan), Seul (Korea), Singapur etc.

## Direct European flights (over 100 connections)

- e.g. Brussels 2h, London 2,5h , Rome 2.5h, Madrid 4h, Frankfurt 1.5h

# Fast access by train, bus or taxi to Warsaw Chopin Airport from city center (8 km – 20 min)



# Warsaw University of Technology



# Tourist attractions (old Warsaw)



**Royal Castle**



**Royal Łazienki**



**Old Town**



**Chopin Museum**

# Tourist attractions (modern Warsaw)





**See you in Warsaw**



**114th IEEE Region 8 Committee Meeting  
Warsaw - 20-22 of March 2020**