

IEEE – Pre-eminent Membership Organization of the 21st Century

S. K. Ramesh, Ph.D., FIEEE,

2021 IEEE President-Elect Candidate



I CARE

Inclusive - Collaborative, Accountable, Resilient, Ethical



Brief Introduction

- ▶ Over three decades of IEEE Experience spanning all OU's
- ▶ IEEE Vice-President, Educational Activities
- ▶ President, IEEE-HKN
- ▶ ABET Board of Directors/Delegates
- ▶ IEEE Fellows Committee
- ▶ IEEE Strategic Alignment Committee
- ▶ Several leadership roles at Region, Section, Area, Technical Chapter, Student Branch
- ▶ Career as a faculty member, department chair, and dean at two of the largest campuses in the California State System



Challenges and Opportunities

▶ Value of Membership

- How does IEEE serve our globally dispersed and diverse membership?
- What is our value proposition?
for industry members, Young Professionals, and entrepreneurs

▶ Structure

- How are our structures adapting/changing to serve members?

▶ Resources

- How do we adapt to the changes in the Publications business in the world of Open Access?

▶ Relevance

- How do we remain relevant in these rapidly changing times

My Priorities

- ▶ **G**row IEEE globally by promoting a culture of collaboration, transparency, diversity, and inclusion.
- ▶ **O**ffer members easy access to industry focused workshops, and continuing education programs.
- ▶ **I**ncrease the value of standards, conferences, and publications.
- ▶ **E**ngage members and support their ongoing professional and career needs
- ▶ **E**mpower our diverse worldwide membership to build leading edge technical communities and nurture strategic partnerships that lower barriers and enhance innovation.
- ▶ **E**nergize, and incentivize members to keep IEEE at the forefront of future technical directions

Membership

- ▶ Our membership is diverse and globally dispersed.
 - More than half of our members are in Regions 7-10, with 30 % in Region 10, and 18 % in Region 8
 - 49 % of our members belong to a technical society
 - Annual attrition in membership
- ▶ What our members are telling us
 - Keep us technically current
 - Industry focused application workshops, conferences and journals
 - Continuing Education (Need tailored products/services)
 - Support for ongoing professional and career growth
 - μVolunteering, IEEE Xplore Flex for Young Professionals & Entrepreneurs

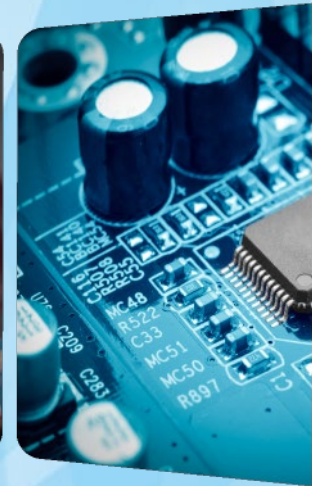
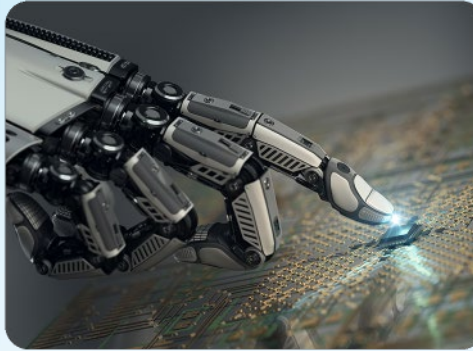
Collaboration is critical to our success



<p>Vision for IEEE Learning Network:</p> <p>Provide one portal/website for IEEE educational courses to be discovered</p> <p>And</p> <p>Allows users to track their learning progress</p>



Thank You!



@SKRamesh_IEEE



www.facebook.com/RameshSK2020/



<http://www.linkedin.com/in/s-k-ramesh-78b74910>



s.ramesh@ieee.org

+1 916-956-8045

www.rameshsk.com