

118th IEEE Region 8 Committee Meeting

02-03 April 2022

<https://ieeer8.org/category/committee/meetings/2022-april-warsaw/>

Warsaw Marriot Hotel, Warsaw, Poland

<https://www.marriott.com/hotels/travel/wawpl-warsaw-marriott-hotel/>

Content:

1. Covid requirements for travelers from Schengen area
2. Covid requirements for travelers outside of Schengen area
3. How to get from the Warsaw Chopin airport to the hotel
4. How to get from the Warsaw Modlin airport to the hotel to the hotel
5. COVID conditions
6. Hotel address, check-in/check-out
7. Basic information about Poland
8. Visa Information
9. Warsaw climate
10. How to get to Warsaw
11. Travel advisories issued by Polish authorities for travelers
12. About Warsaw and Poland

1. Covid requirements for travelers from Schengen area and Turkey.

<https://www.gov.pl/web/coronavirus/eu-member-states-schengen-area>

Following rules applied for people arriving from the following counties:
All Member States of the European Union, Iceland, Liechtenstein, Norway, Switzerland and Turkey.

From 28.03.2022 there is no obligation to fill in the Passenger Locator Form (PLF) before arriving in Poland. The details are in [this link](#), which I strongly recommend to read. Current information on persons allowed to cross the Polish border can be found on the website of [the Border Guard](#).

Persons vaccinated against COVID-19 are exempt from 7-day quarantine. This applies to persons who have a certificate of vaccination with a vaccine which has been granted a marketing authorization within the European Union. Full vaccination is recognized 14 days after completion of the vaccination process.

On [this website](#) are some details for interested or unvaccinated people.

2. Covid requirements for travelers outside of Schengen area.

<https://www.gov.pl/web/coronavirus/outside-the-european-union-schengen-area>

There is mandatory testing for COVID-19 for all people traveling from outside the Schengen area. Persons who fail to present a negative test result will be required to undergo a 7-day quarantine.

The test result must not be older than 24 hours before arrival and can be taken at airports in Warsaw - before the border check or 3 hours after arrival (counting from the border check). [Here](#) is recommended site to test on Chopin Airport, and [here](#) is for Modlin airport. Registration before arrival is voluntary, but it significantly speed up the whole process.

You can take RT-PCR or antigen test.

If you have negative covid test, and are fully vaccinated, you are exempted from 7-day quarantine. The vaccination must be certified by EU digital COVID certificate or another document confirming the vaccination, in Polish or English and 14 days have to pass since the last vaccination dose was administered.

From 28.03.2022 there is no obligation to fill in the Passenger Locator Form (PLF) before arriving in Poland. The details are in [this link](#), which I strongly recommend to read. On [this website](#) are some details for interested or unvaccinated people. Current information on persons allowed to cross the Polish border can be found on the website of [the Border Guard](#).

3. How to get from the Warsaw Chopin airport to the hotel

There are plenty of options you can choose:

1. BUS:

THE BEST ACCESS FROM THE AIRPORT TO WARSAW MARRIOTT HOTEL AND BACK IS BUS NUMBER 175. YOU HAVE TO GET IN ON LOTNICKO CHOPINA-PRZYLOTY (CHOPIN AIRPORT – DEPARTURES) STATION, WHICH IS RIGHT AT THE AIRPORT. THE WHOLE TRIP TAKES 27 MINUTES. THEN GET OFF THE BUS AT DWORZEC CENTRALNY (WARSAW CENTRAL RAILWAY STATION) AND WALK TO THE HOTEL, WHICH IS ON THE OTHER SIDE OFF THE STREET. YOU WILL CERTAINLY SEE IT.

Schedule: DURING WORK HOURS, BUSES ARE AVAILABLE EVERY 20 MINUTES. [Here is link](#) TO THE EXACT SCHEDULE FROM THE AIRPORT.

HOW TO BUY A BUS TICKET?

THERE ARE TICKET MACHINES IN MOST VEHICLES. ALSO, THERE ARE 3 TICKET MACHINES ON THE BUS STOPS. ENGLISH IS AVAILABLE. THE TICKET COST 4.4ZŁ. TICKETS BOUGHT OUTSIDE OF BUS HAVE TO BE VALIDATED INSIDE.

2. TRAIN:

IF YOU REALLY PREFER TRAINS, YOU CAN RIDE FROM WARSZAWA LOTNICKO CHOPINA (CHOPIN AIRPORT) STATION. TRAINS RIDES 28 MIN. YOU HAVE TO GET OF THE TRAIN AT WARSZAWA ŚRÓDMIEŚCIE (WARSAW DOWNTOWN) STATION FROM WHICH, YOU WILL CERTAINLY SEE THE HOTEL. TRAINS ARE AVAILABLE EVERY 30 MINUTES. BECAUSE OF THE FASTER BUS CONNECTION, IT'S NOT RECOMMENDED OPTION, SO I WILL NOT DELIBERATE IT FURTHER.

3. TAXI:

THERE IS PLENTY OF TAXI APPLICATIONS

BOLT - <https://bolt.eu/>

UBER - <https://www.uber.com/pl/en/>

FREENOW - <https://free-now.com/pl-en/passenger/>

ASLO THERE IS TAXI APP INTEGRATION IN GOOGLE MAPS

USING THESE APPS YOU SHOULD INSERT "PRZYLOTY"

The cost is about 10 Euros.

4. How to get from the Warsaw Modlin airport to the hotel

There are 3 different options:

1. Bus:

The first and recommended option by a Modlin Bus. Trips last around an hour and one way tickets cost 2.10€.

The bus stop for the Modlin Bus is located just in front of the exit gates, outside of the arrivals terminal. The bus is quite comfortable and does not make any additional stops along the way to the centre of the city from which you will easily find the hotel. Here is [a link](#) to it's website.

2. Shuttle bus + train

Shuttle buses will be available after each arrival from the airport to Modlin railway station and are free of charge. Ride takes about 10 minutes. Then you have to take a direct train connection to Warsaw. Please remember, to take a train that stops in Waszawa Centralna (Warsaw main) station from which you have to just cross a street. Tickets can be purchased from the train station and cost about 4€. The combined trip takes around 50 minutes.

3. Taxi

The fastest travel method is by hiring a Modlin airport taxi, operated by either Sawa Taxi or Taxi Modlin, which are two private taxi companies airport cooperates. Taxi trips last 40 minutes on average and fares range from 38€ to 47€.

5. Covid Conditions

Since March 28, the obligation to cover mouth and nose with a mask in closed spaces is no longer valid - except for medical entities and pharmacies. At the same time, referral for isolation and quarantine due to COVID-19 is removed. So there are almost none Covid-19 rules.

6. Hotel address, check-in/check-out

Hotel Marriot
al. Jerozolimskie 65/79 , 00-697 Warszawa
www.warsawmarriott.pl
tel. 0048 22 630 63 06
Check-in: 4:00 pm
Check-out: 12:00 pm



7. Basic information about Poland

Time zone: During conference Poland has GMT+02.00 time zone.

International organizations: Poland is a member of the European Union, the Schengen Area and NATO.

Currency: 1 zloty (PLN) = 100 groszy. 1 EUR=4.73PLN. Current exchange rates: www.nbp.pl. Cart payment and ATM are extremely popular and available. I highly suggest you to make sure, that you have some sort of multi-currency card that's accepts transactions in PLN as in most places, Euro is not accepted. Or you can just exchange some cash. Prizes are generally consider to be low by European standard.

Some taxis can be paid in euro, especially those operated on airports, but it's not a standard, so **I strongly suggest you to buy some PLN before or right after arrival.**

Language: Polish, but English is widely spoken by almost everyone under 50. Especially in Warsaw.

Drinking alcohol in public (outside) is not allowed. Tap water is universally drinkable. Socket type is C/E, the same as in almost all Europe.

8. Visa Information

All necessary information for your trip to Poland can be found at the official website of the Ministry of Foreign Affairs of the Republic of Poland at the link:

http://www.ms.gov.pl/en/travel_to_poland/travel_to_poland

Entry conditions are specified in:

http://www.ms.gov.pl/en/travel_to_poland/entering_poland/entry_conditions/

<https://www.gov.pl/web/diplomacy/visas>

Citizens from countries specified in:

http://www.ms.gov.pl/en/travel_to_poland/entering_poland/visa_free/visa_free_countries

do not have to apply for VISA.

However, if you are a citizen from a country not specified in the list, you should follow the VISA advice at:

<https://www.gov.pl/web/diplomacy/visas>

and GO TO E-KONSULAT TO APPLY FOR THE VISA at:

<https://secure.e-konsulat.gov.pl>

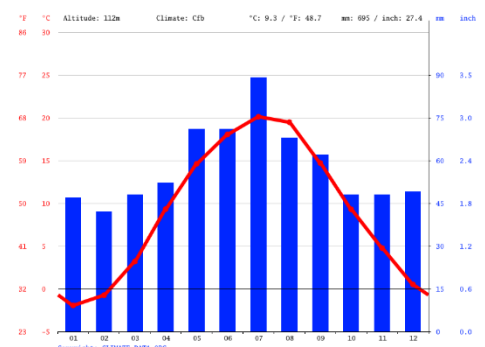
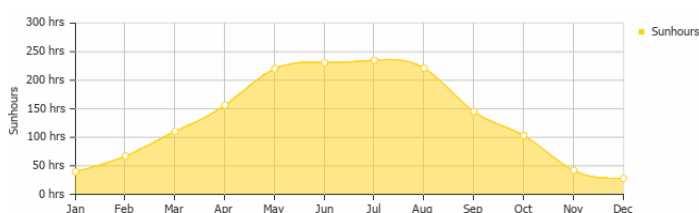
9. Warsaw climate

I advise you to check [weather forecast at Warsaw](#) before arrival. Current data suggest, that the weekend will be cold and rainy, so better take your coat and umbrella.

Weather: The Polish climate is moderate continental. It's the beginning of the spring, so there can be chilly. During the entire year, the rain falls for 169 days and collects up to 519 mm of precipitation.

Daylight: On the first day of April, the sunrise will be at 6.10 am, and the sunset will be at 7.10 pm

Sunshine: The average sunshine in April is about 5hrs a day.



10. How to get to Warsaw

Airplane:

There are two airports: "**Frideric Chopin Airport**" (<https://www.lotnisko-chopina.pl/en/index.html>) located 7km from Warsaw City-Center and a low-cost airport "**Warsaw Modlin Airport**" (<https://en.modlinairport.pl/>) found 40 km from Warsaw City-Center.

Train:

Take Warsaw Central Station (Warszawa Centralna) as your destination station for traveling by international train. The Warszawa Centralna is around 300 m from the Warsaw Marriott Hotel. For more details, please visit <http://rozklad-pkp.pl/en>.

Bus:

For regular international buses, lines visit <https://www.flixbus.pl/>

Car:

From the West, please take the A2 highway (E30). From the North, take road no. E77. From the South, take road nos. E76 and E77. From the East, take roads nos. E30 and E67.

11. Travel advisories issued by Polish authorities for travellers

A WHO advisory on international travel can be found at: https://www.who.int/ith/2019-nCoV_advice_for_international_traffic/en/

The Polish Chief Sanitary Inspector has also issued related information available at has: <https://www.lotnisko-chopina.pl/en/news/0/978/szczegoly.html>.

The contact information for the center for disease control in Warsaw and the hospital nearest to the Warsaw Marriot Hotel are as follows:

- a) Center for disease control:
Główny Inspektorat Sanitarny (Main Sanitary Inspectorate)
ul. Targowa 65,
03-729 Warszawa
+48 22 536 13 00
<https://gis.gov.pl/en/homepage/>

- b) Main hospital:
Wojewodzki Szpital Zakazny w Warszawie (Main Infectious Diseases Hospital)
ul. Wolska 37,
01 – 201 Warszawa
tel.: +48 22 335 53 51 (..55)
<http://zakazny.pl/>

12. About Warsaw and Poland

Poland, officially the Republic of Poland, is a country in Central Europe covering an area of 312,696 km². Poland has a population of over 38 million, and is the fifth-most populous member state of the European Union. After dissolution of communist government in 1990, Poland has become a developed market. It has the fifth largest economy in the European Union by GDP (PPP). It provides very high standards of living, safety and economic freedom, as well as free university education and a universal health care system. The country has 17 UNESCO World Heritage Sites, 15 of which are cultural. Poland is a member state of the United Nations, the World Trade Organization, NATO, and the European Union (including the Schengen Area).

Warsaw is the largest city of Poland and its capital, with more than two million inhabitants, around 250 thousand students, and 80 different universities and academic schools. The city hosts The reconstructed Old Town, which represents examples of nearly every European architectural style and historical period, was listed as a World Heritage Site by UNESCO in 1980. Other main architectural attractions include the Royal Castle and the iconic King Sigismund's Column, the Wilanów Palace, the Palace on the Isle, St. John's Cathedral, Main Market Square, as well as numerous churches and mansions along the Royal Route. Warsaw possesses thriving arts and club scenes, gourmet restaurants and large urban green spaces, with around a quarter of the city's area occupied by parks.

To see more information about Warsaw, please go to: <https://warsawtour.pl/en/main-page/>

To see more information about Poland, please go to: <https://polska.pl/>

